

Fairfax County Public Schools Hearings Office Annual Report 2005 – 2006



Hearings Office Case Report 2005 - 2006

Purpose

This report provides information on recommendations to the Superintendent’s Hearings Office for hearings during the 2005-2006 school year. The report provides data to support the management of the Fairfax County Public Schools.

Contents

Introduction.....	3
Summary.....	4
Total Case Statistics.....	5
Expulsion Rule Violations Overview.....	11
Reassignments	18
Exclusion Rule Violations	19
Recidivism – Violation of Probationary Conditions	20
Case Decisions by Hearings Office	23
School Board Case Statistics	24

Introduction

This is a report on recommendations for disciplinary action and requests for re-entry submitted to the Superintendent's Hearings Office for the 2005-2006 school year. This report includes data on:

- Expulsion – Removal from Fairfax County Public Schools,
- Exclusion – Imposition of expulsion or long-term suspension from another school district,
- Reassignment – Request for placement in alternative school program as a result of charges for a crime in the community, and
- Reentry - Request for return to FCPS.

The report is based upon receipt date of recommendations (*the case year*) during the 2005-2006 school year (July 1, 2005 to June 30, 2006).

In those instances (in this report) where a singular year is listed, the FCPS fiscal year is indicated (i.e. 2004 represents the 2003-2004 school year).

The report provides data to support the management of the Fairfax County Public Schools.

Inquiries about this report should be directed to the Superintendent's Hearing Officer at the Hearings Office, Office of the Superintendent, Fairfax County Public Schools – (571) 423-1280.

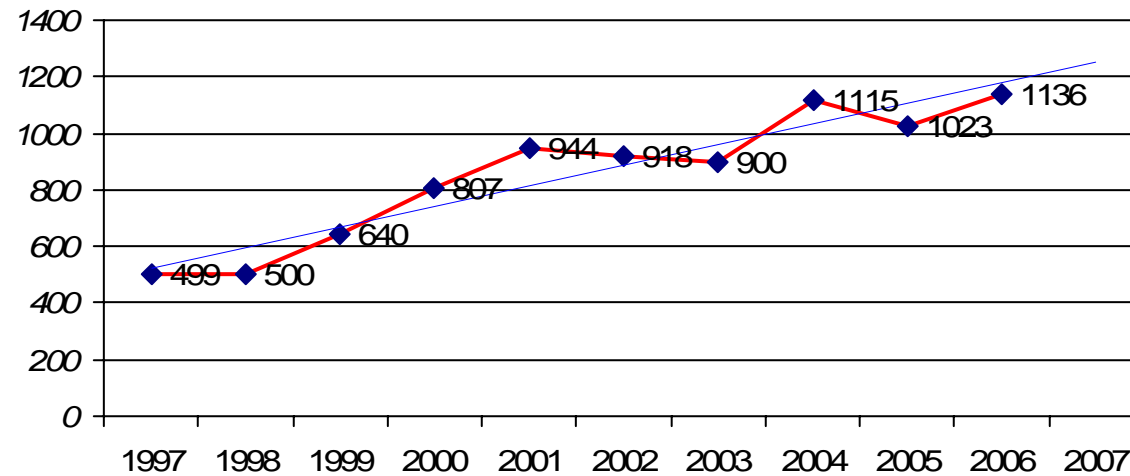
Summary

- 1136 cases were submitted to the Hearings Office during the 2005-2006 school year for expulsion, exclusion, reassignment, and reentry:
 - 949 cases for expulsion
 - 50 cases for reassignment (for crime in the community)
 - 40 cases for exclusion (expelled or long-term suspended from another school district)
 - 97 cases for reentry
- 289 cases were considered by the School Board:
 - 213 cases were considered by three-member School Board hearing committees.
 - 76 cases were considered by the full School Board.
- 181 recidivist cases were submitted to the Hearings Office during the 2005-2006 school year for 154 students.

Total Case Statistics 2005-2006

The Hearings Office conducted 1136 hearings during the 2005-2006 school year.

Total Cases with 10 yr history

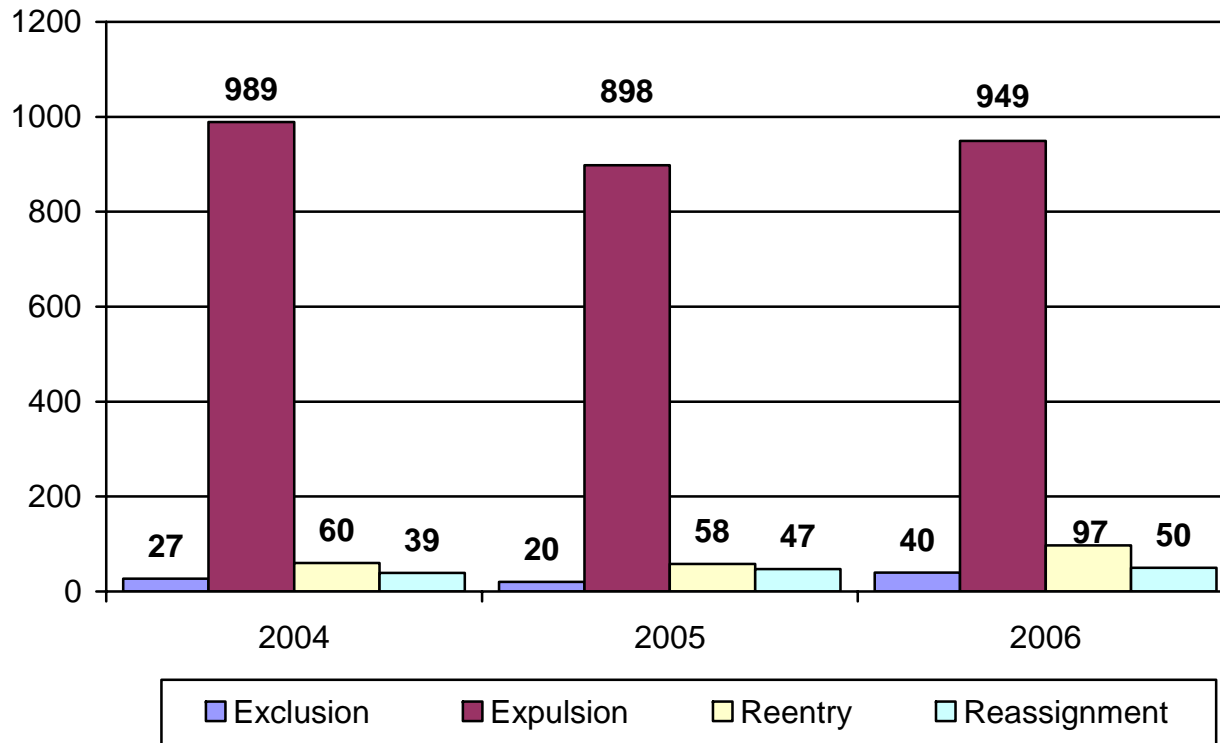


Note: The blue line represents the linear trend over the ten year history

Case Types

The case types for all cases considered by the Hearings Office during the 2005-2006 case year are illustrated below with the two prior years for comparison.

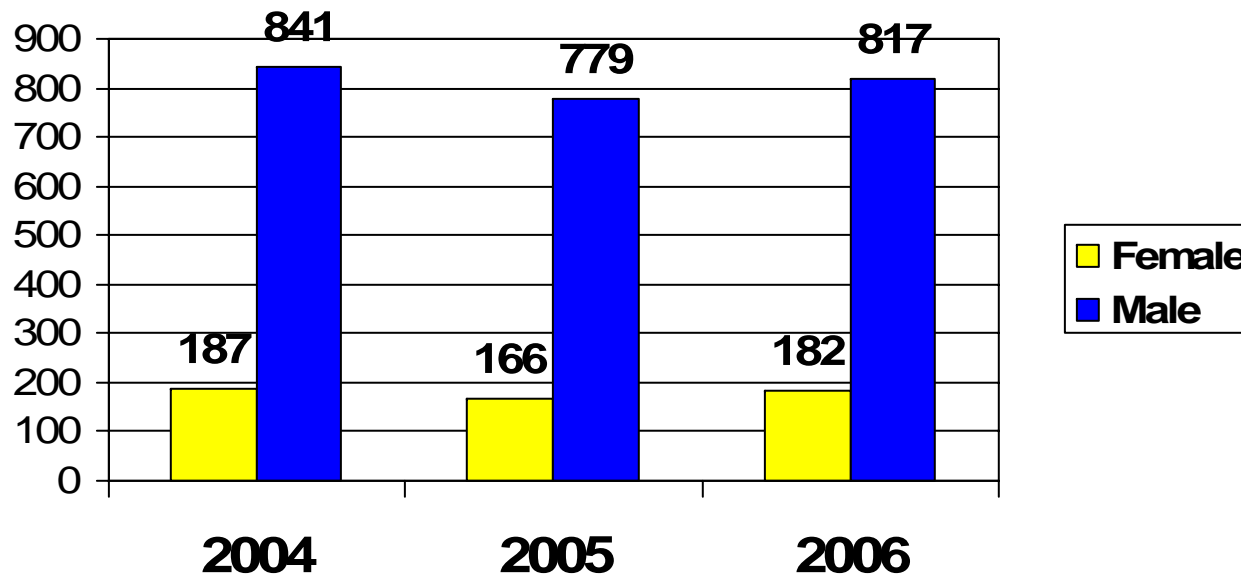
Case Types Three Year History



Gender

Gender distribution for Expulsion and Reassignment cases considered by the Hearings Office during the 2005-2006 case year are illustrated below with the two prior years for comparison.

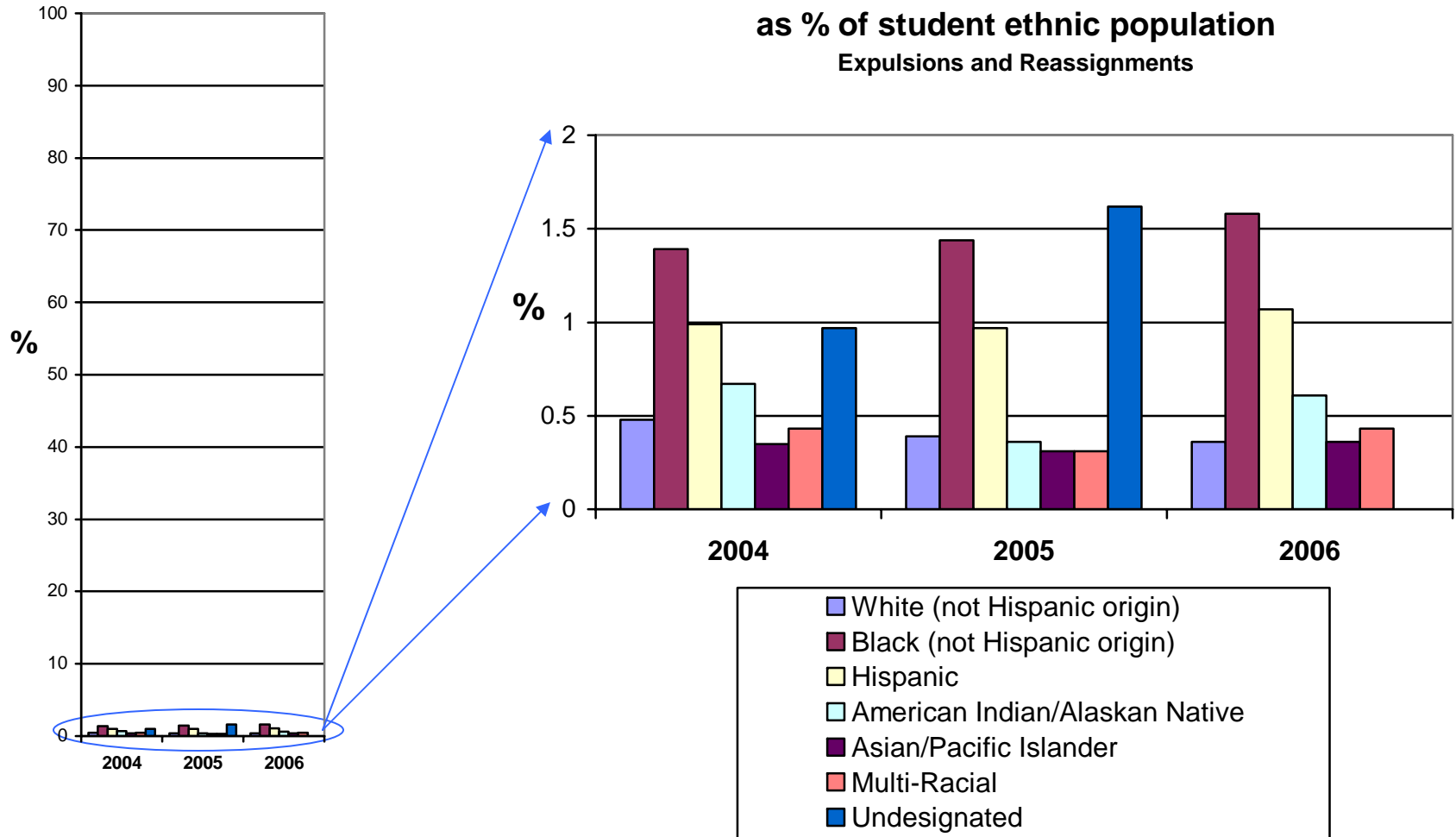
Gender Distribution Expulsions and Reassignments



Note: The graph represents a male/female distribution of 81.8%/18.2% (2004), 82.4%/17.6% (2005), and 81.8%/18.2% (2006).

Ethnic Distribution

as % of student ethnic population
Expulsions and Reassignments



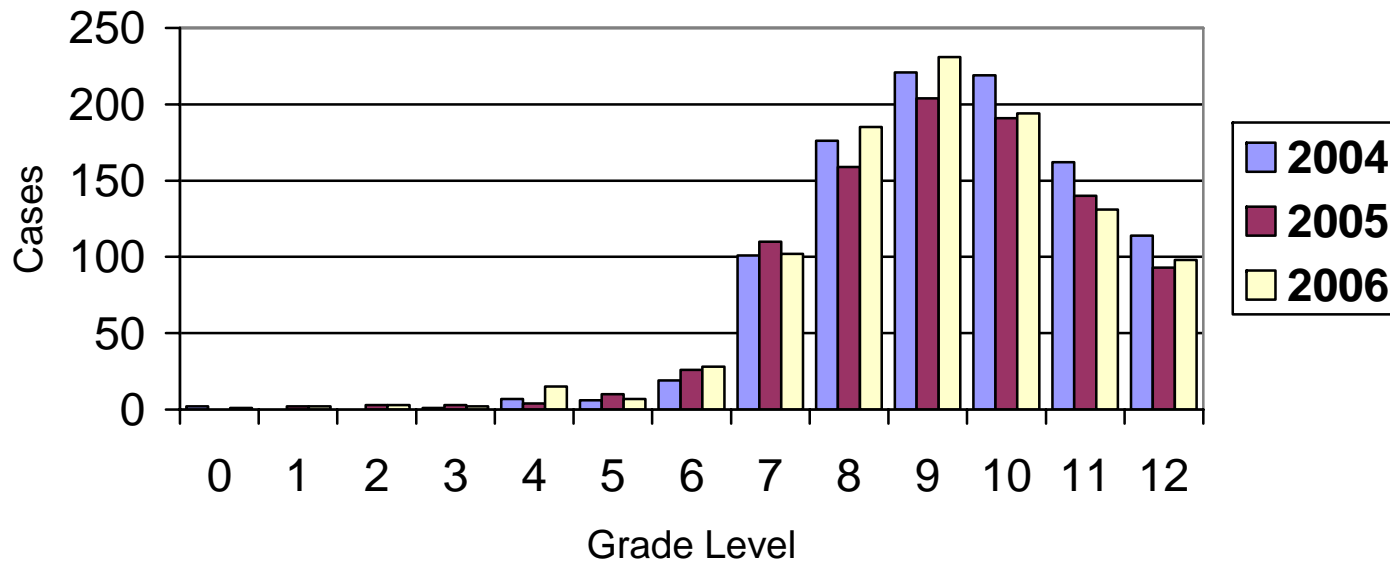
Note: The student ethnic population is based upon Fairfax County Public Schools published statistical reports as of September 30 of the applicable year.

Grade

Grade distribution for Expulsion and Reassignment cases considered by the Hearings Office during the 2005-2006 case year are illustrated below with the two prior years for comparison.

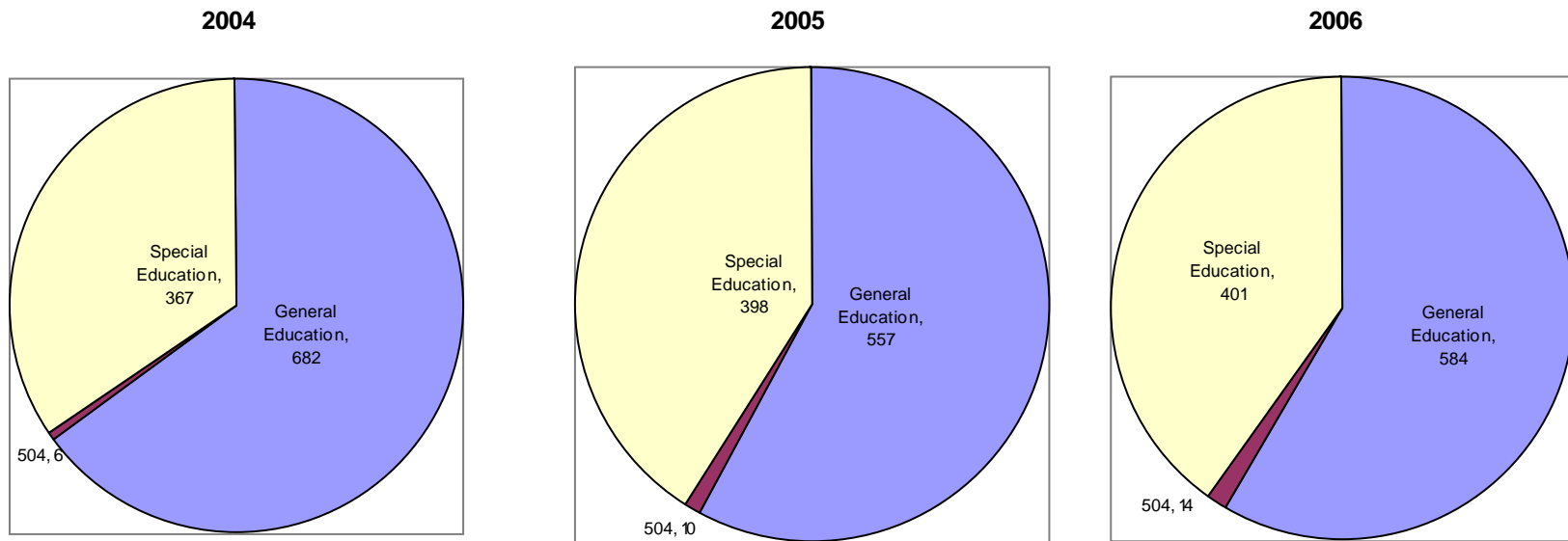
Grade Distribution

Expulsions and Reassignments



Special Education and General Education

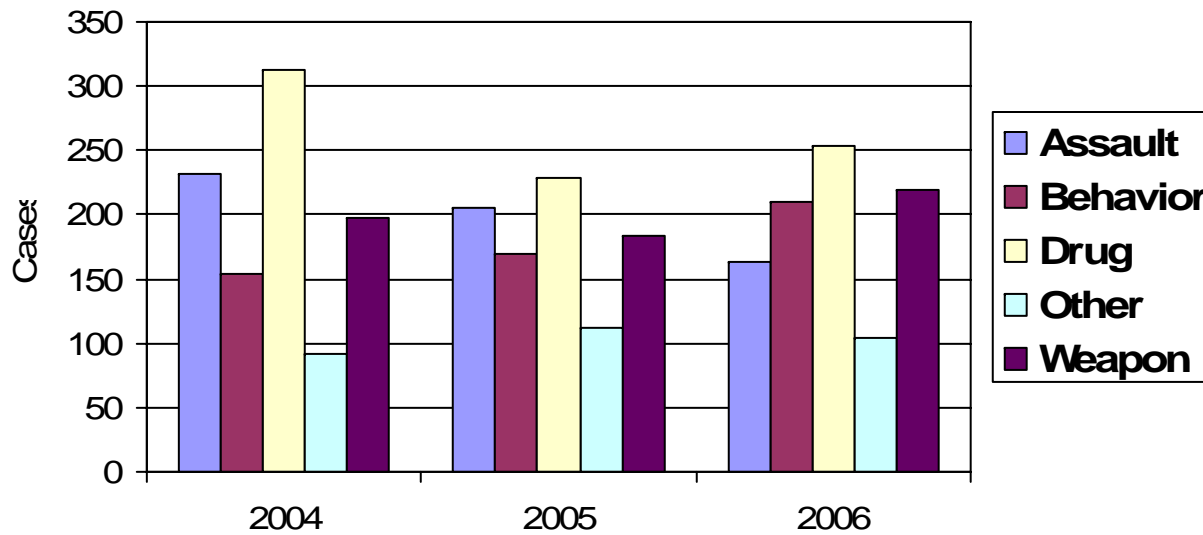
Expulsion and Reassignment cases considered by the Hearings Office during the 2005-2006 case year for special education students and students with active 504 plans are illustrated below with the two prior years for comparison.



Expulsion Rule Violations Overview

Rule Violations for Expulsion cases considered by the Hearings Office during the 2005-2006 case year are illustrated below with the two prior years for comparison.

Rule Violations Expulsions

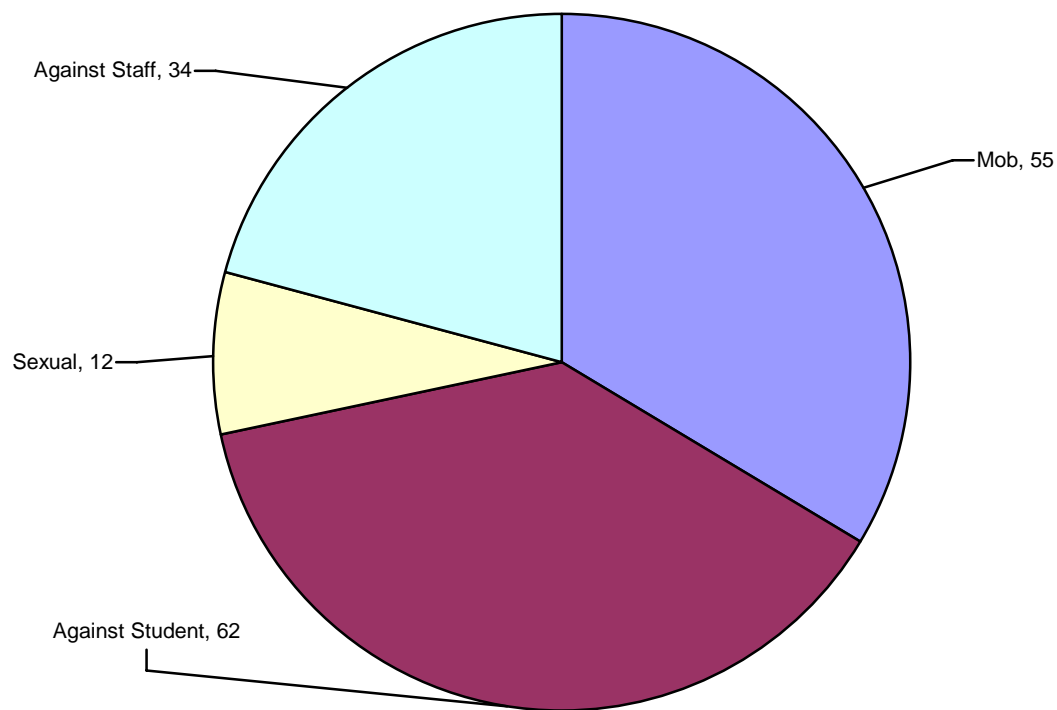


Note: Other includes arson, bomb threat, computer violation, gang activity, robbery, theft, vandalism, etc.

Assault Violations

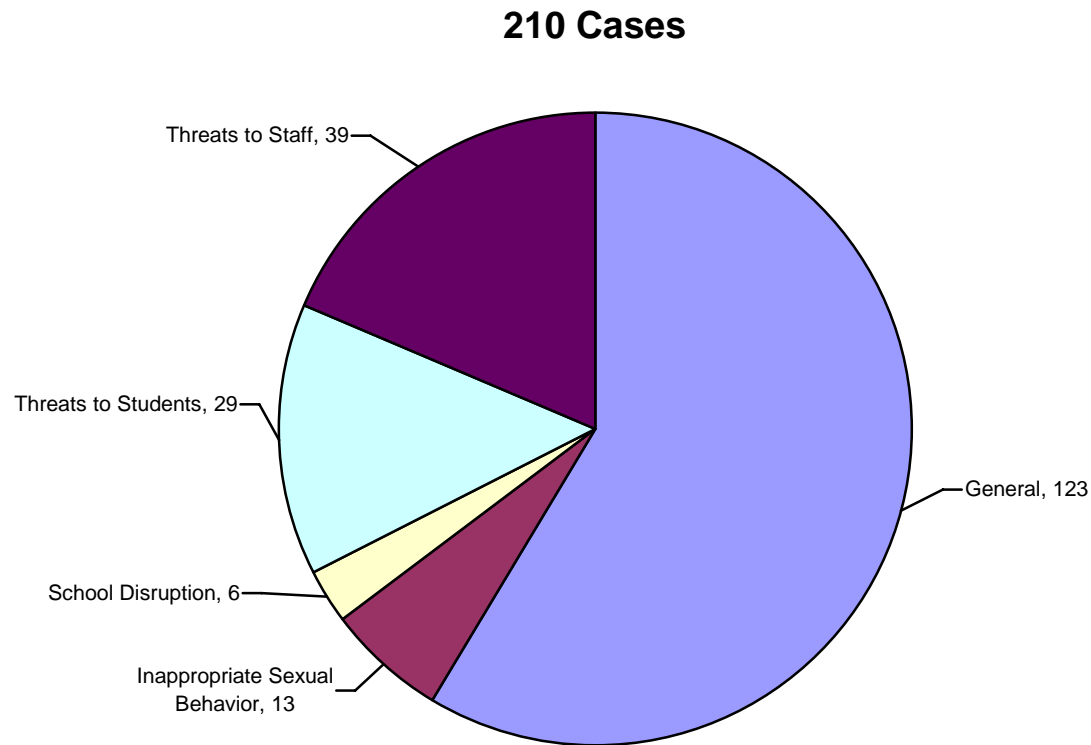
Recommendations for expulsion for assault considered by the Hearings Office during the 2005-2006 case year are illustrated below.

163 Cases



Behavior Violations

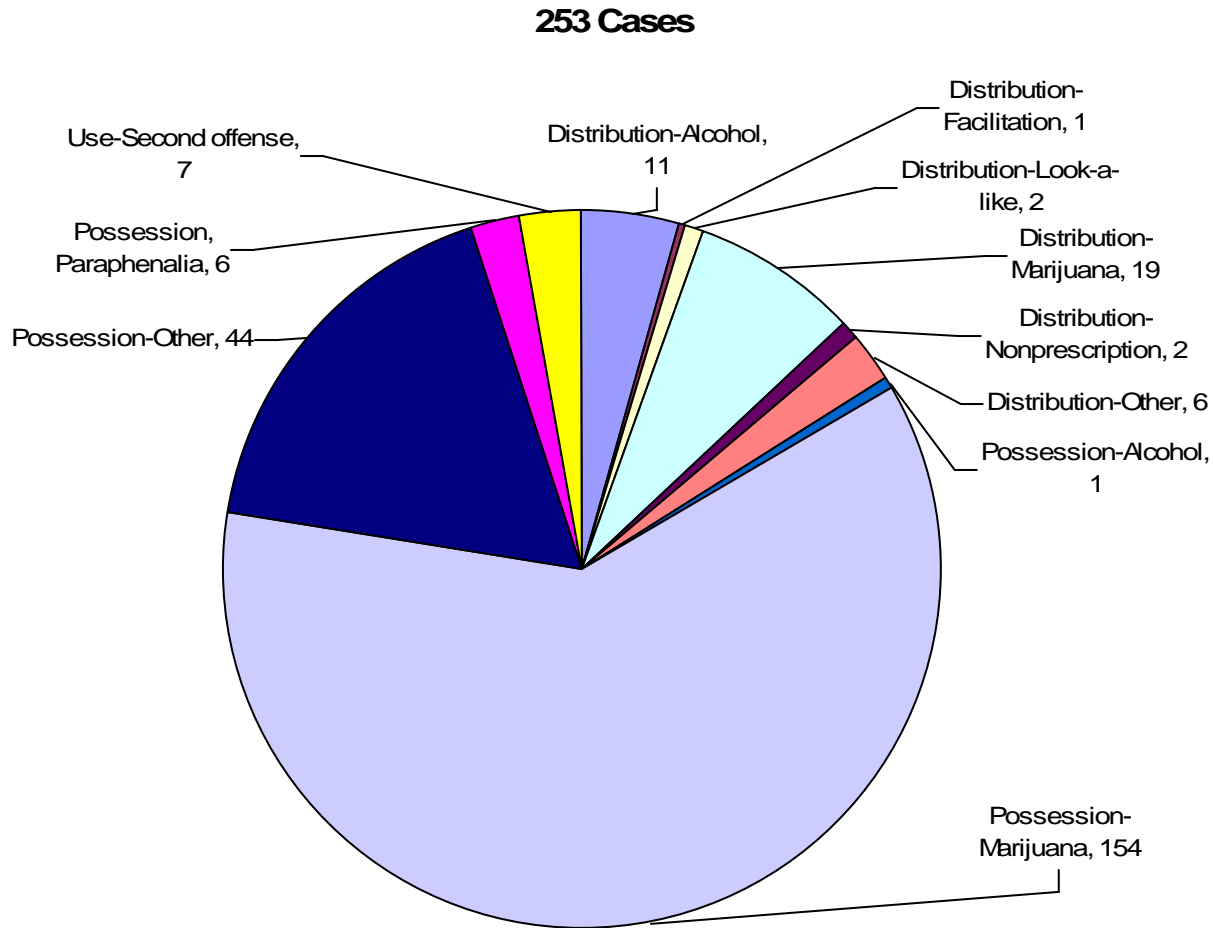
Recommendations for expulsion for behavior considered by the Hearings Office during the 2005-2006 case year are illustrated below.



Note: General includes inappropriate behavior and classroom disruption.

Drug and Alcohol Violations

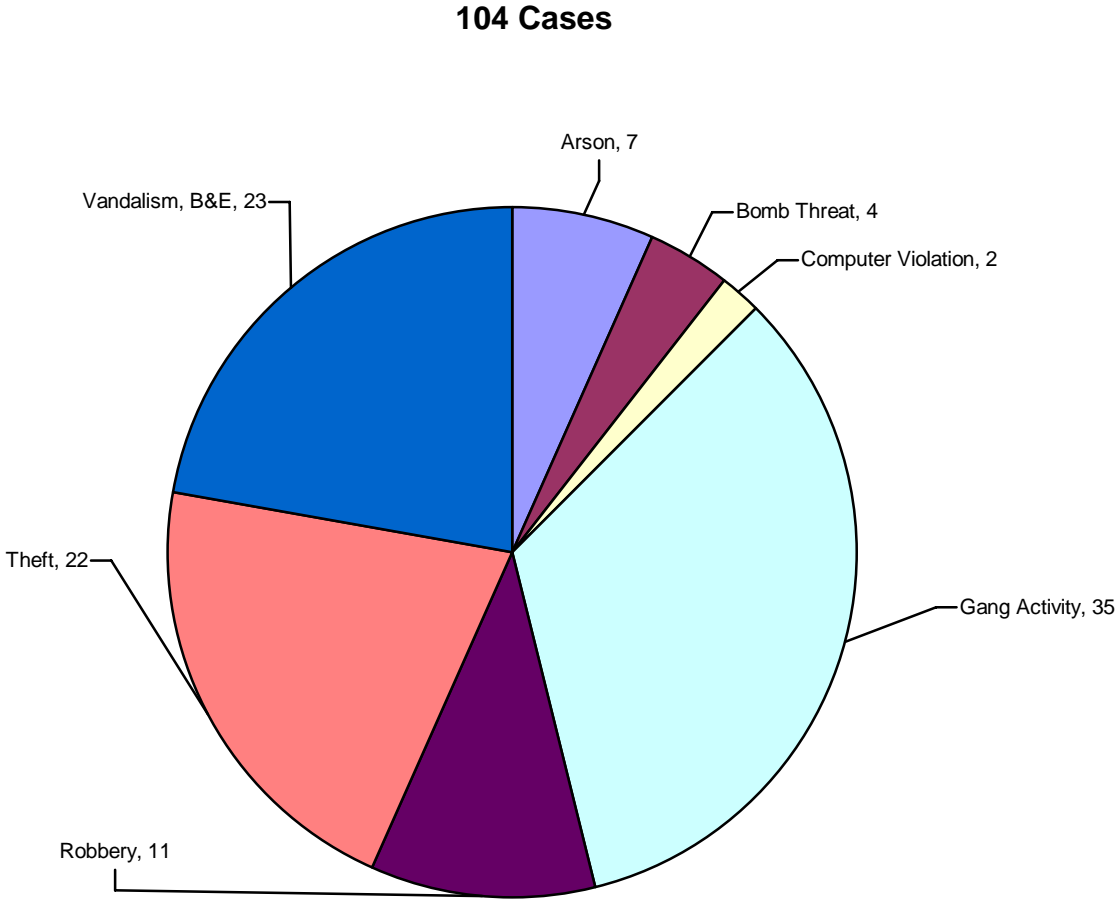
Recommendations for expulsion for drug and alcohol violations considered by the Hearings Office during the 2005-2006 case year are illustrated below.



Note: Other includes prescription drugs, heroin, cocaine, LSD, ecstasy, etc.

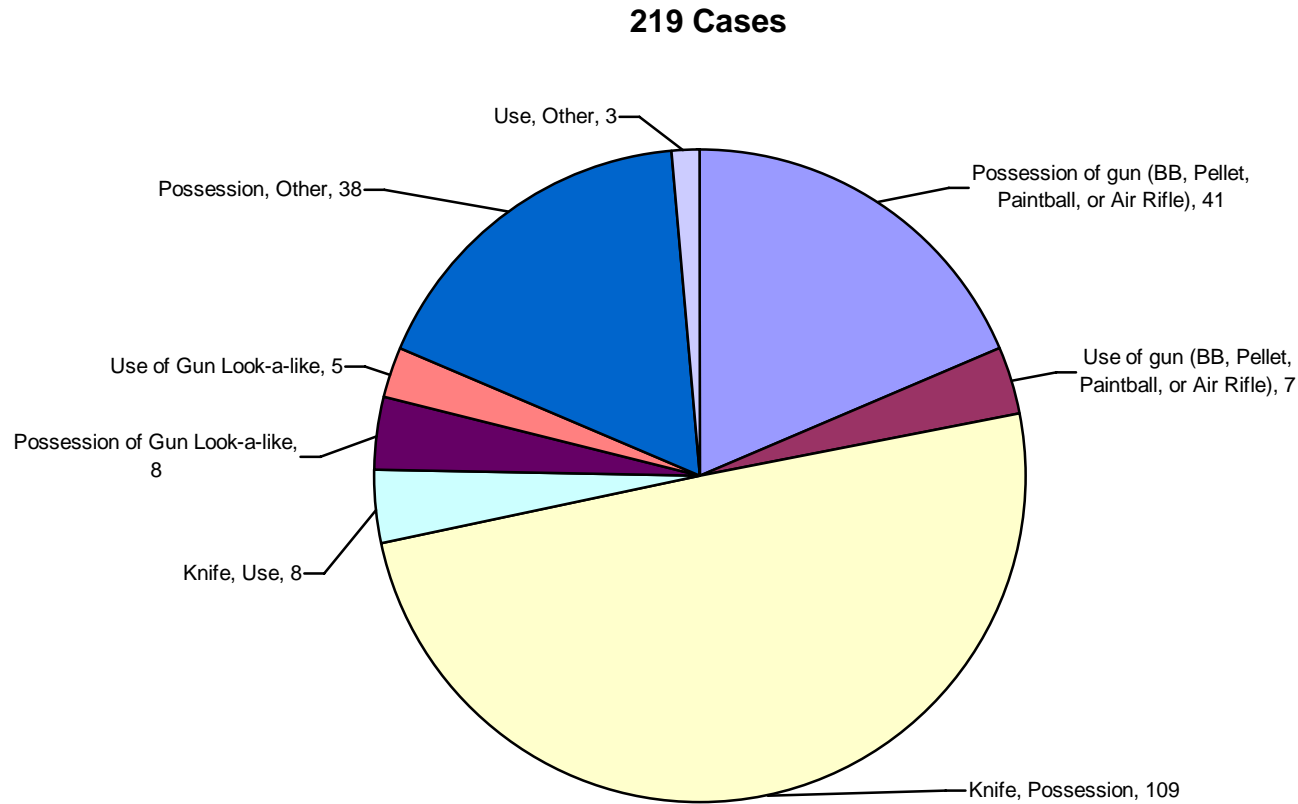
Other Violations

Recommendations for expulsion for other violations considered by the Hearings Office during the 2005-2006 case year are illustrated below.



Weapon Violations

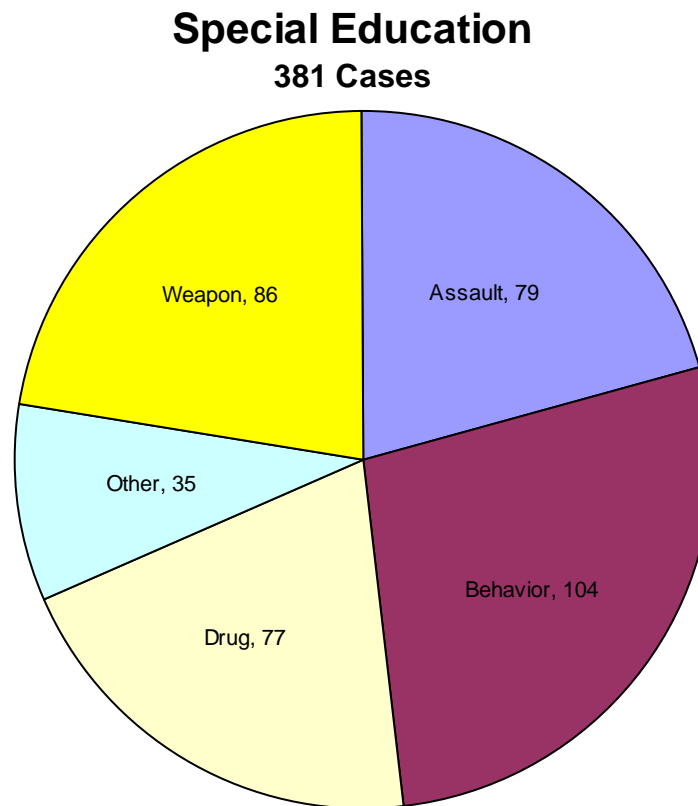
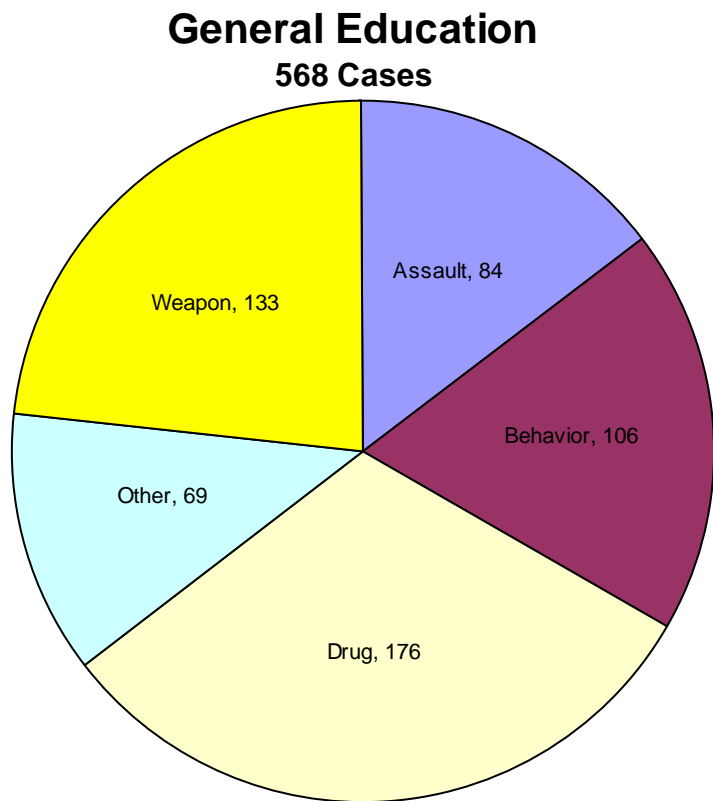
Recommendations for expulsion for weapon violations considered by the Hearings Office during the 2005-2006 case year are illustrated below.



*Note: Other includes mace, machete, explosives, brass knuckles, metal pipe, knife less than 3 inches, etc.
Use includes threatening or brandishing.*

Violations of Student Responsibilities and Rights (SR&R)

General Education and Special Education

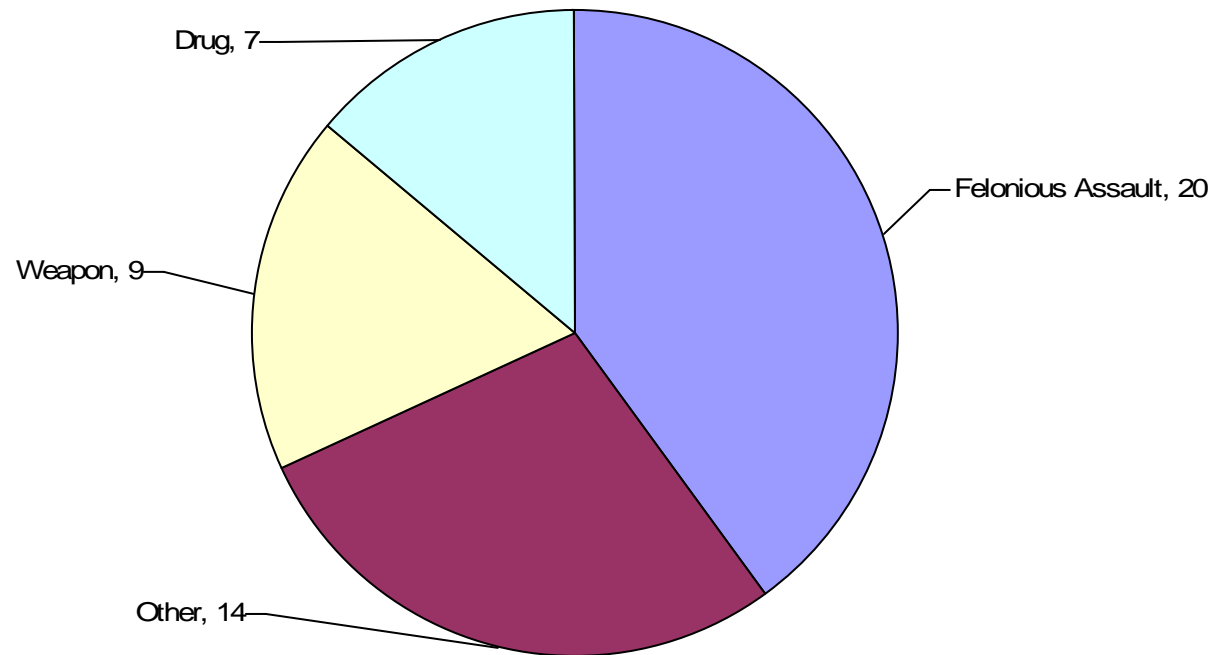


Note: Other includes arson, bomb threat, computer violation, gang activity, robbery, theft, vandalism, etc.

Reassignments Crime in the Community

Principals may request reassignment of a student to an alternative school program when a student is charged with a crime in the community. Reassignment cases considered by the Hearings Office during the 2005-2006 case year are illustrated below.

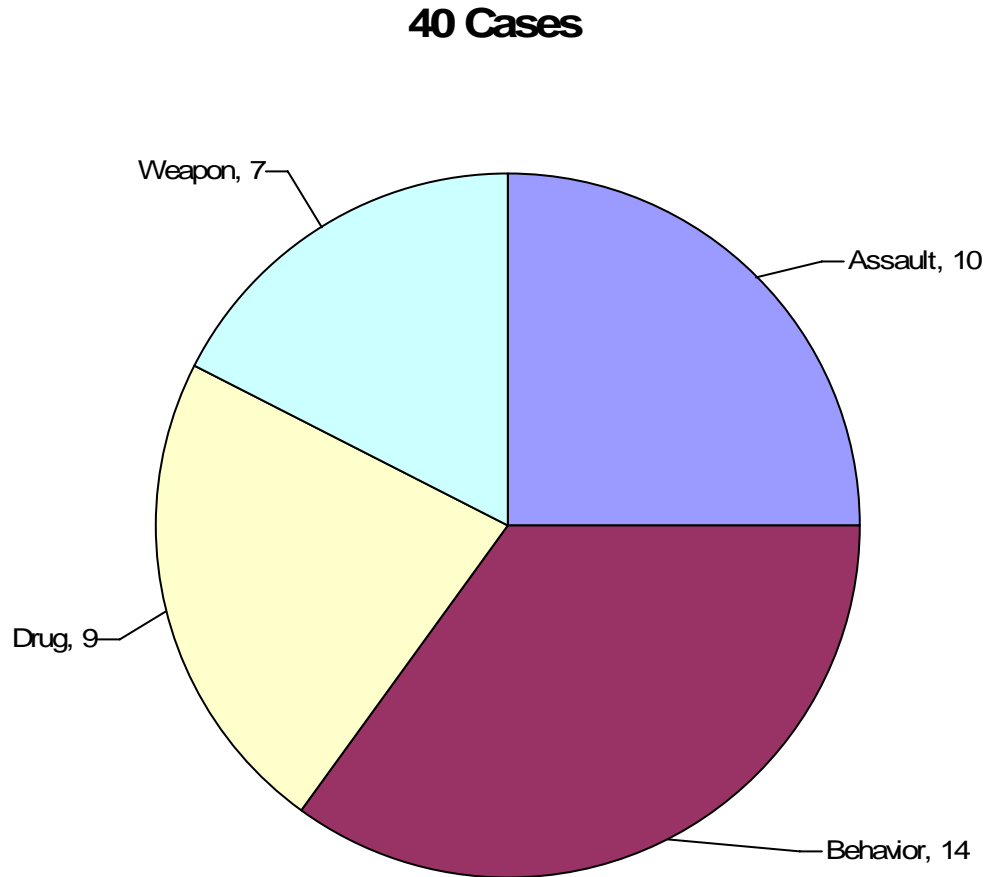
Court Charges 50 Cases



Note: Other includes abduction, gang activity, homicide, and robbery.

Exclusion Rule Violations

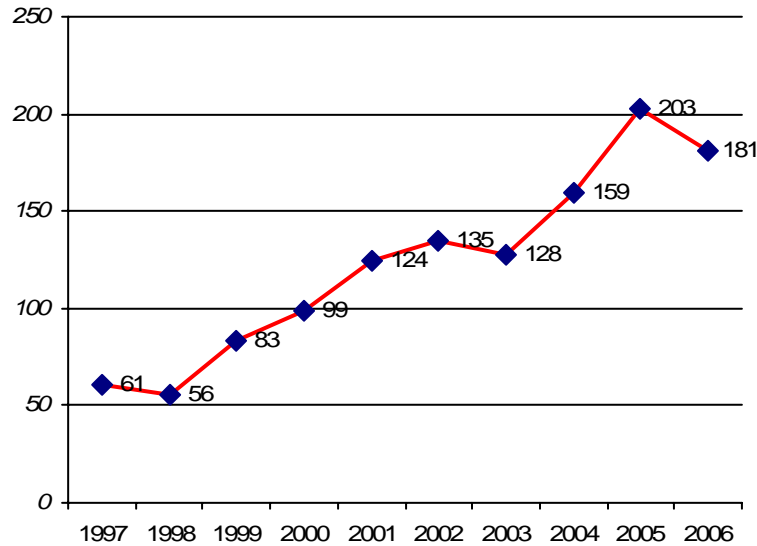
Students who have been expelled or long-term suspended from another school district may be excluded from FCPS. Exclusion cases considered by the Hearings Office during the 2005-2006 case year are illustrated below.



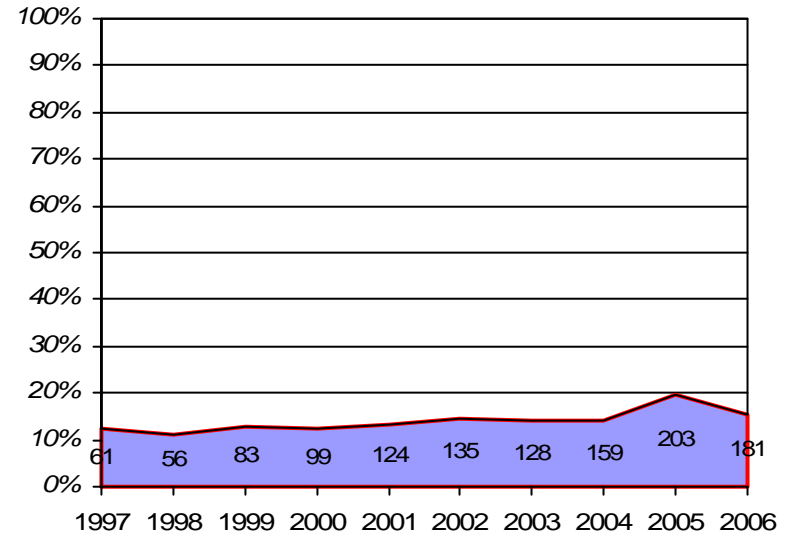
Recidivism – Violation of Probationary Conditions

Students for whom disciplinary hearings have been held are probationary students who are expected to maintain good behavior, attendance, and grades. One hundred eighty-one cases were submitted to the Hearings Office during the 2005-2006 school year for expulsion or reassignment of 154 students who have had previous hearings.

Recidivism Cases with 10 yr history

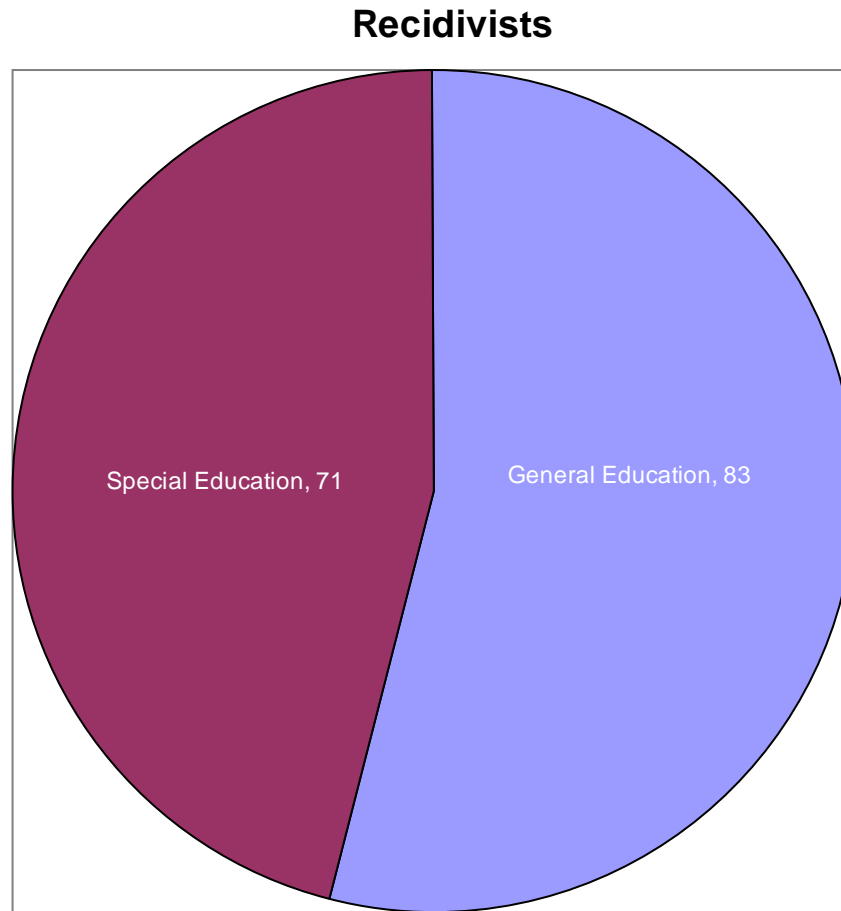


10 Year History Recidivism Cases as percentage of total annual cases



Recidivism - Special Education and General Education

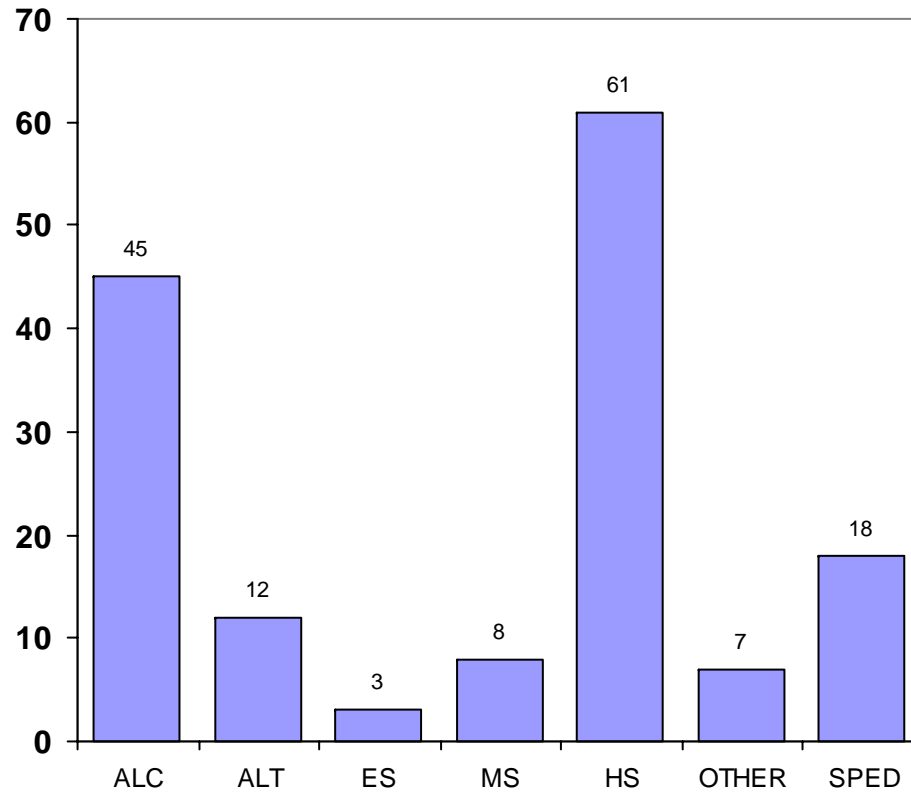
Recidivism of special education and general education students considered by the Hearings Office during the 2005-2006 case year are illustrated below.



Recidivist Students – Recommendation School Source Type

Illustrated below are the school types for schools submitting cases to be considered by the Hearings Office for recidivist students for whom cases were heard during the 2005-2006 case year.

Submitting School Type Recidivists



Note: Other includes interagency alternative schools and Richard Milburn. SPED are special education centers.

Case Decisions by Hearings Office

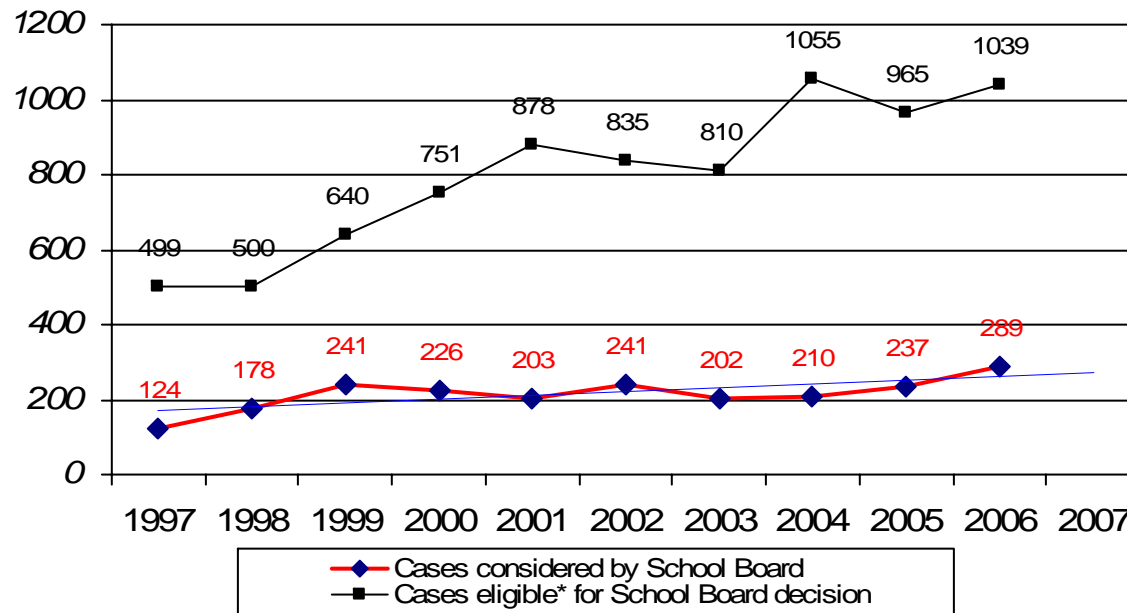
One thousand one hundred thirty-six (1136) cases were considered by the Hearings Office during the 2005-2006 school year.

School Placements	210	IEP Placements	238
Return to school	49	Permitted a regular school setting	77
Another school placement	130	Restricted to an alternative school setting	161
Regular school placement (exclusion or reentry only)	31		
Alternative School Placements	283	Letter of Agreement	220
Alternative Learning Center	142	Long Term Suspended	117
Alternative High School	63	Hearings Office Placed 06-07	74
Interagency Alternative Schools (CEI or TSRC)	59	regular school	39
GRANTS/GED	4	alternative school	35
Richard Milburn High School	8	IEP Placed 06-07	25
Summit Program	7	permitted a regular school setting	7
		restricted to an alternative school setting	18
		Graduated	18
Excluded from FCPS	6	Permitted to Graduate	3
Expulsion Reinstated	4	Withdrew from FCPS	4
Forward to the School Board	51	Reentry hearing required	3
		Special education evaluation required	1

School Board Case Statistics 2005-2006

Two hundred eighty-nine cases were considered by the School Board for the 2005-2006 school year.

School Board Cases with 10 yr history



*Note: The blue line represents the linear trend over the ten year history
* includes expulsion, reassignment, and exclusion*

School Board Hearings Summary

2005 - 2006

School Board Hearings	<u>289</u>
Full School Board Hearings	<u>76</u>
Case forwarded to School Board by Hearings Office, decision not appealed	34
Letter of Agreement offered by Hearings Office, not returned and not appealed	38
Appeal (on written record) of Hearings Office decision for reassignment or exclusion case	4
School Board Committee Hearings	<u>213</u>
Case forwarded to School Board by Hearings Office, decision appealed	17
Letter of Agreement offered by Hearings Office, signed	154
Letter of Agreement offered by Hearings Office, appealed	28
Appeal of Hearings Office decision to hold expulsion in abeyance	14

School Board Decisions

The School Board heard 289 cases during the 2005-2006 school year - 4 cases on the written record, 59 cases on appeal, 154 signed letters of agreement (LOA), and 72 cases unappealed or LOA not signed.

Expelled - 264

Adult Education	1
Achievement, Integrity, Maturity	2
Alternative Learning Center	56
Alternative High School	12
Expelled – no services/court credit only	32
GED	2
Permitted to Graduate	1
Interagency School (CEI or TSRC)	50
IEP Placement to an alternative program	100
Long-Term Suspension	3
placed at alternative learning centers for 06-07	
Richard Milburn High School	4
Summit Program	1

Not Expelled – 25

Alternative Learning Center	5
Alternative High School	5
Another Regular School Placement	6
Interagency Alternative School	1
IEP Placement	6
permitted a regular school setting	2
restricted to an alternative school setting	4
Long-Term Suspension	2
permitted to graduate	1
placed at alternative learning center for 06-07	1