

Fairfax County Public Schools Hearings Office Annual Report 2009 – 2010



Hearings Office Case Report 2009 - 2010

Purpose

This report provides information on recommendations to the Superintendent’s Hearings Office for hearings during the 2009-2010 school year. The report provides data to support the management of the Fairfax County Public Schools.

Contents

Introduction.....	3
Summary.....	4
Total Case Statistics.....	5
Expulsion Rule Violations Overview.....	11
Recidivism – Violation of Probationary Conditions.....	18
Case Decisions by Hearings Office.....	19
School Board Case Statistics.....	20

Introduction

This is a report on recommendations for disciplinary action and requests for re-entry submitted to the Superintendent's Hearings Office for the 2009-2010 school year. This report includes data on:

- Expulsion - Removal from Fairfax County Public Schools
- Exclusion - Imposition of expulsion or long-term suspension from another school district or private school
- Reassignment – Assignment to alternative educational setting as a result of criminal charges for an alleged crime in the community, or of serious offence(s) in violation of school board policies
- Reentry - Request for return to FCPS

The report is based upon receipt date of recommendations during the 2009-2010 school year (July 1, 2009 to June 30, 2010).

In those instances (in this report) where a singular year is listed, the FCPS fiscal year is indicated (i.e. 2008 represents the 2007-2008 school year).

The report provides data to support the management of the Fairfax County Public Schools.

Inquiries about this report should be directed to the Superintendent's Hearing Officer at the Hearings Office, Office of the Superintendent, Fairfax County Public Schools, 8115 Gatehouse Road, Falls Church, Virginia 22042.

Summary

- 833 cases were submitted to the Hearings Office during the 2009-2010 school year for expulsion, exclusion, reassignment, and reentry:
 - 636 cases for expulsion
 - 67 cases for reassignment (for alleged crime(s) in the community, or for serious offense(s) in violation of school board policies)
 - 13 cases for exclusion (for students expelled or long-term suspended from another school district or private school)
 - 117 cases for reentry

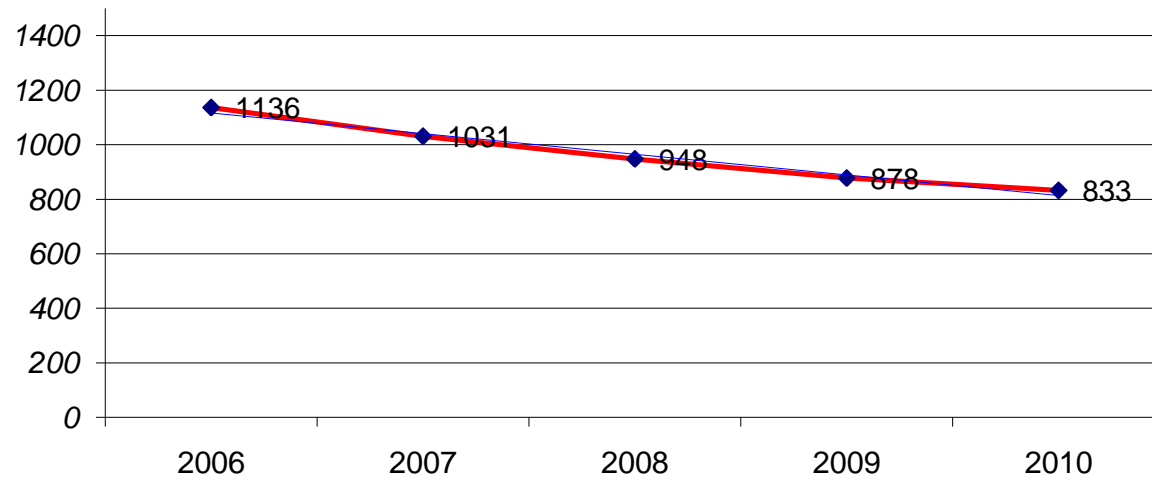
- 166 cases were considered by the School Board:
 - 98 cases were considered by three-member School Board hearing committees.
 - 68 cases were considered by the full School Board.

- 132 recidivist cases were submitted to the Hearings Office during the 2009-2010 school year for 118 students.

Total Case Statistics 2009-2010

The Hearings Office conducted 833 hearings during the 2009-2010 school year.

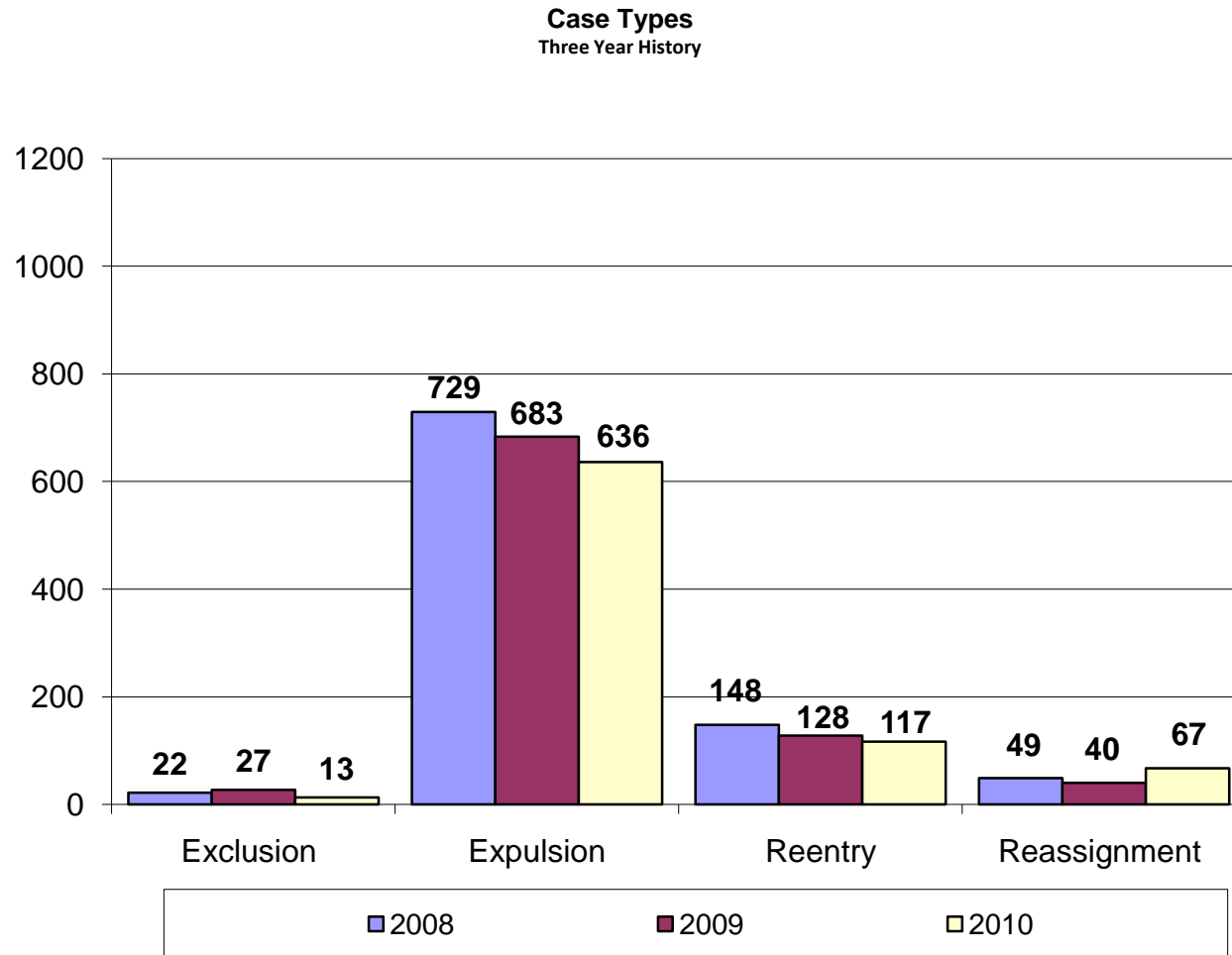
Total Cases with 5 yr history



Note: The blue line represents the linear trend over the five year history

Case Types

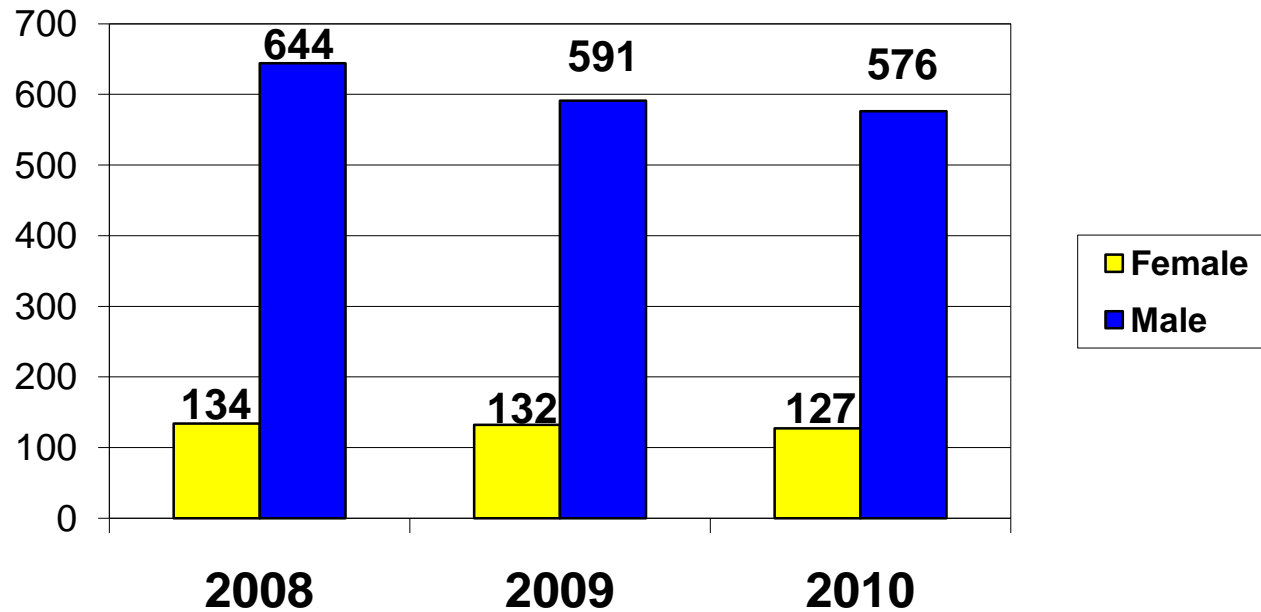
The case types for all cases considered by the Hearings Office during the 2009-2010 case year are illustrated below with the two prior years for comparison.



Gender

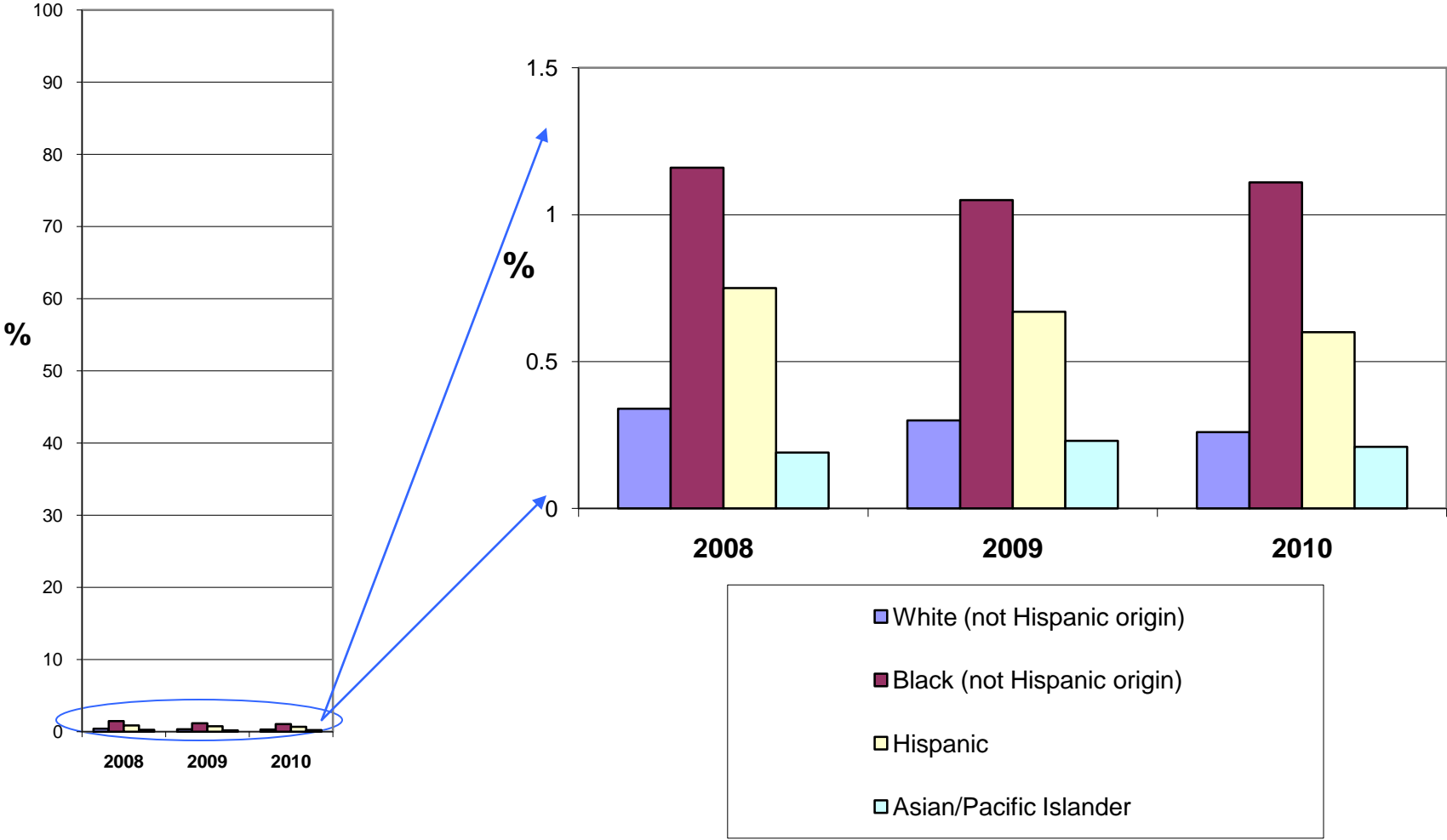
Gender distribution for Expulsion and Reassignment cases considered by the Hearings Office during the 2009-2010 case year are illustrated below with the two prior years for comparison.

Gender Distribution
Expulsions and Reassignments



Note: The graph represents a male/female distribution of 82.8%/17.2% (2008), 81.7%/18.3% (2009), and 81.9%/18.1% (2010).

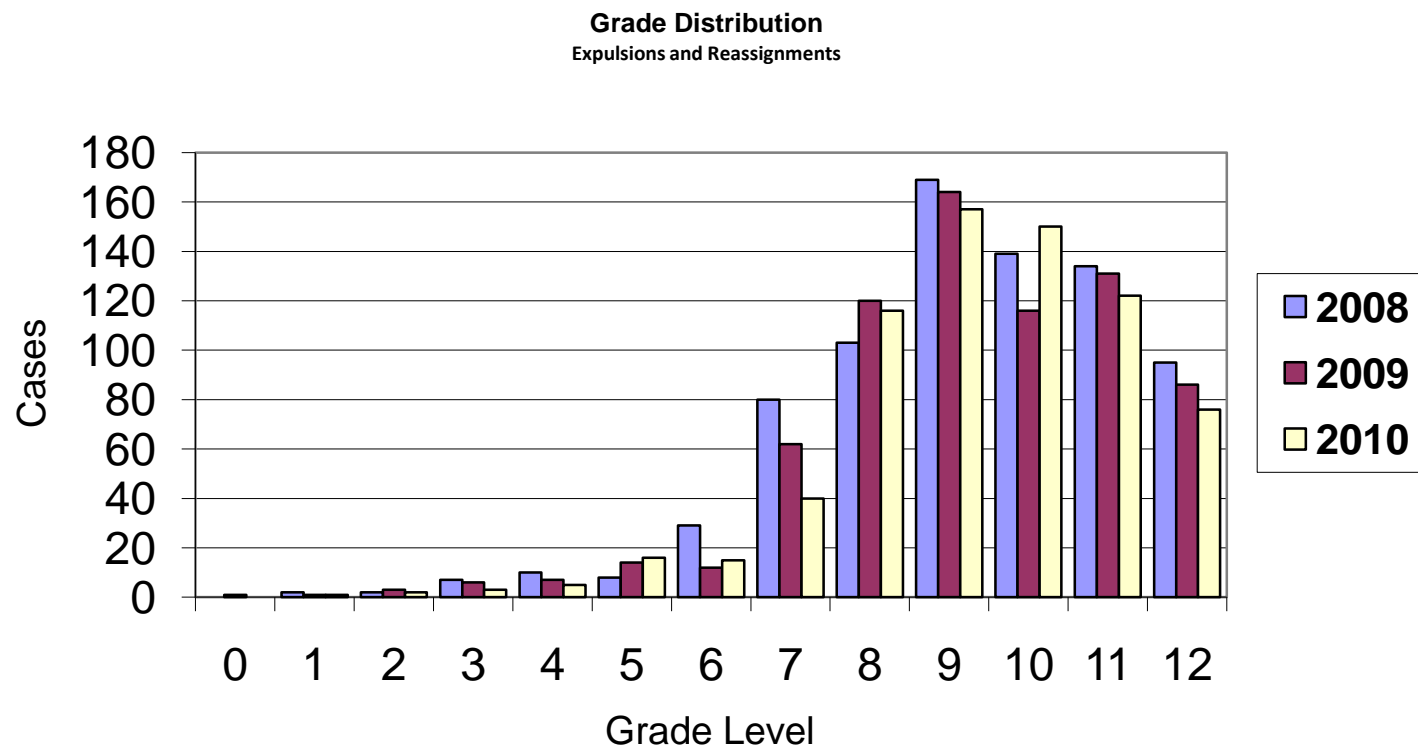
Ethnic Distribution
as % of student ethnic population
Expulsions and Reassignments



Note: The student ethnic population is based upon Fairfax County Public Schools published statistical reports as of September 30 of the applicable year.

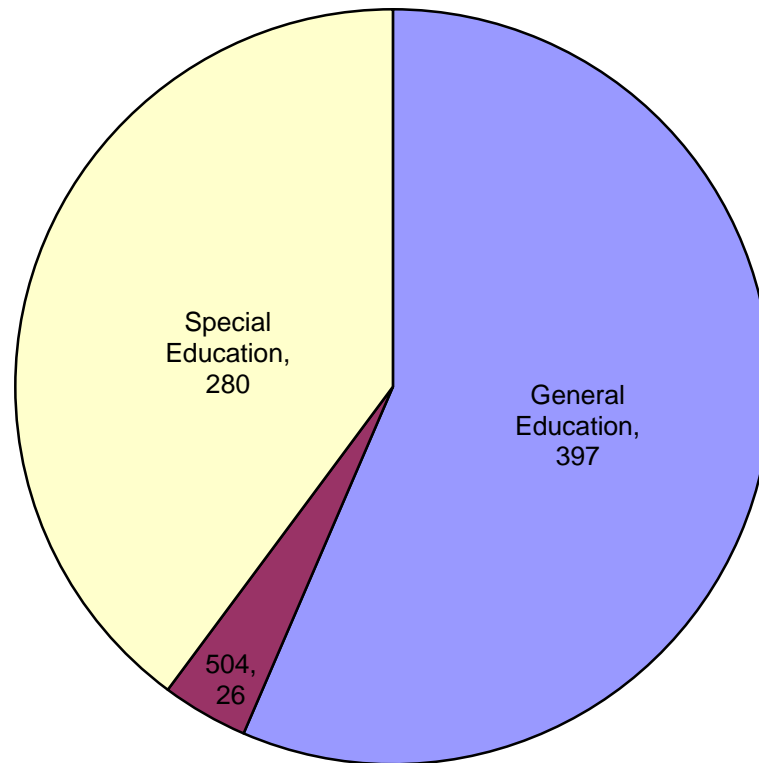
Grade

Grade distribution for Expulsion and Reassignment cases considered by the Hearings Office during the 2009-2010 case year are illustrated below with the two prior years for comparison.



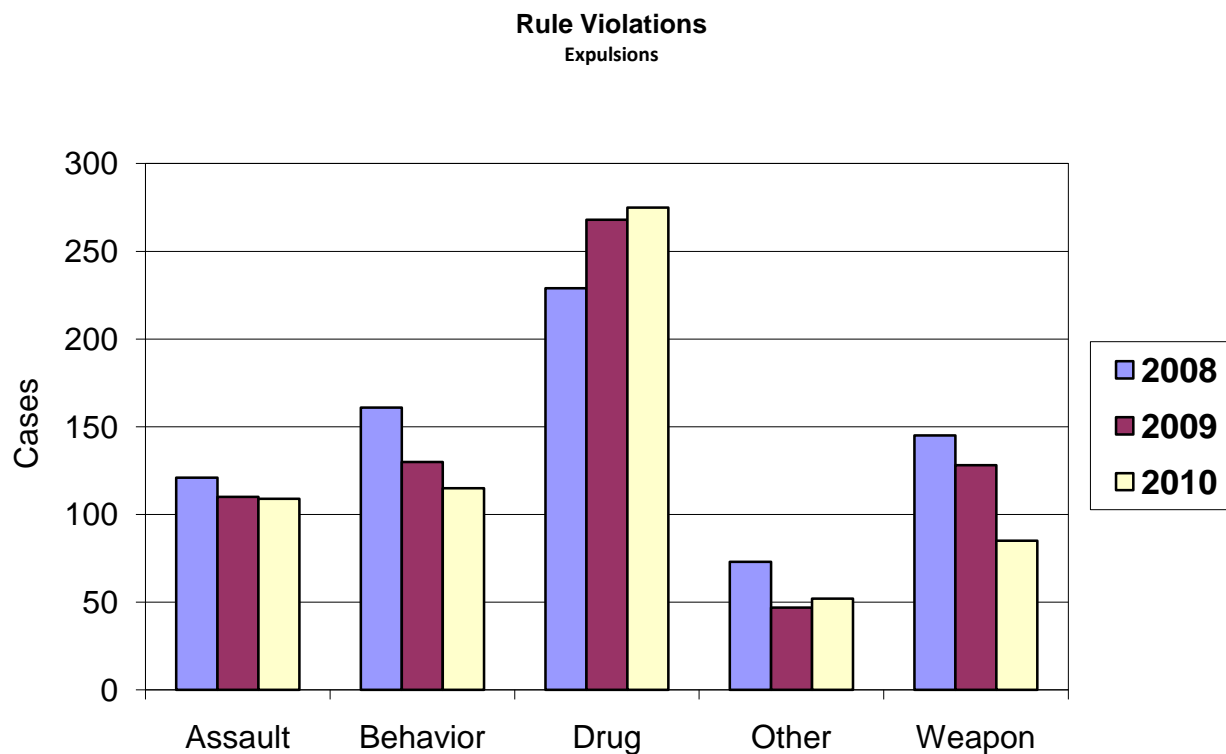
Special Education and General Education

Expulsion and Reassignment cases considered by the Hearings Office during the 2009-2010 case year for special education students and students with active 504 plans are illustrated below.



Expulsion Rule Violations Overview

Rule Violations for Expulsion cases considered by the Hearings Office during the 2009-2010 case year are illustrated below with the two prior years for comparison.

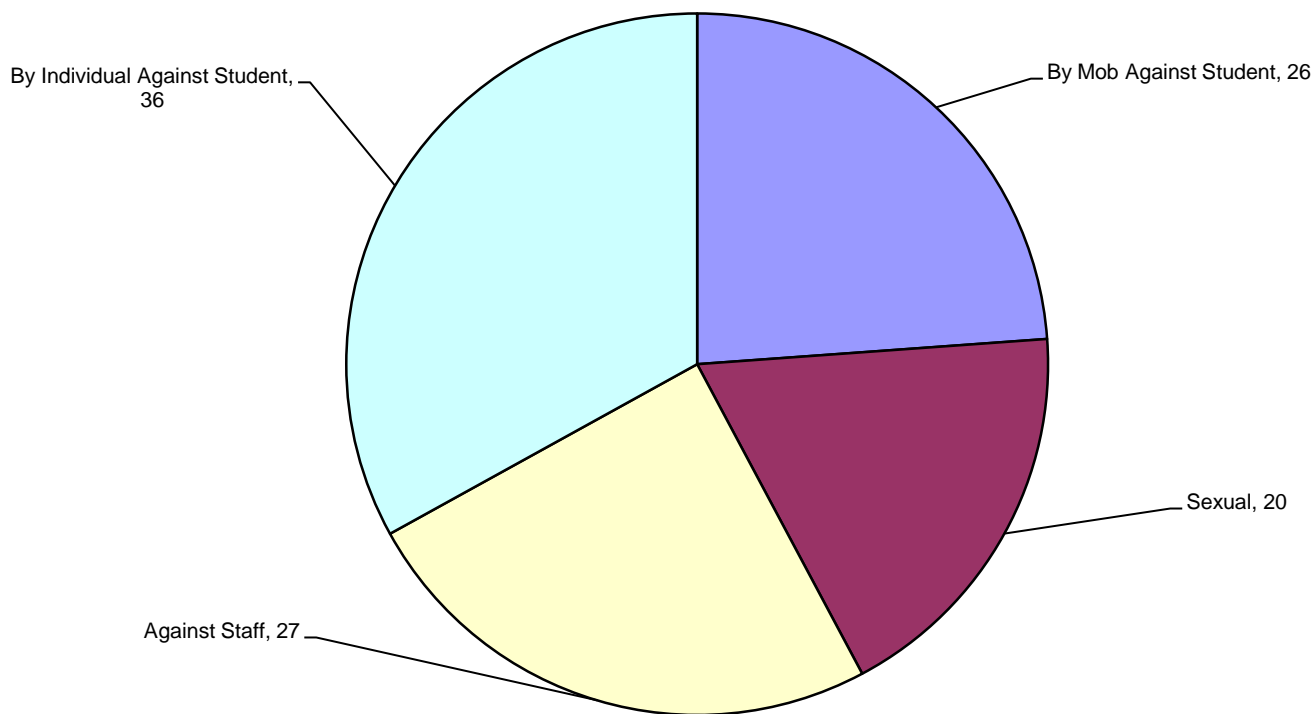


*Note: Other includes arson, bomb threat, gang activity, robbery, theft, vandalism, etc.
Behavior includes disruption, threats, etc.*

Assault Violations

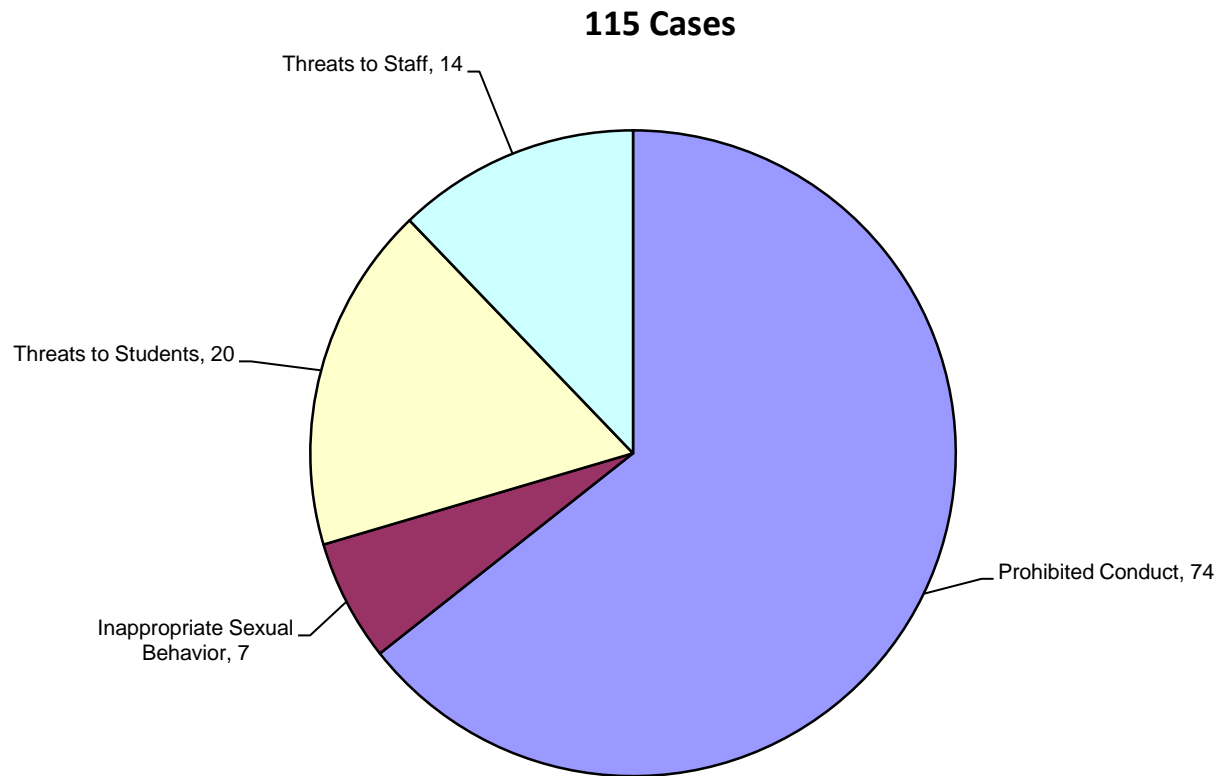
Recommendations for expulsion for assault considered by the Hearings Office during the 2009-2010 case year are illustrated below.

109 Cases



Behavior Violations

Recommendations for expulsion for behavior considered by the Hearings Office during the 2009-2010 case year are illustrated below.

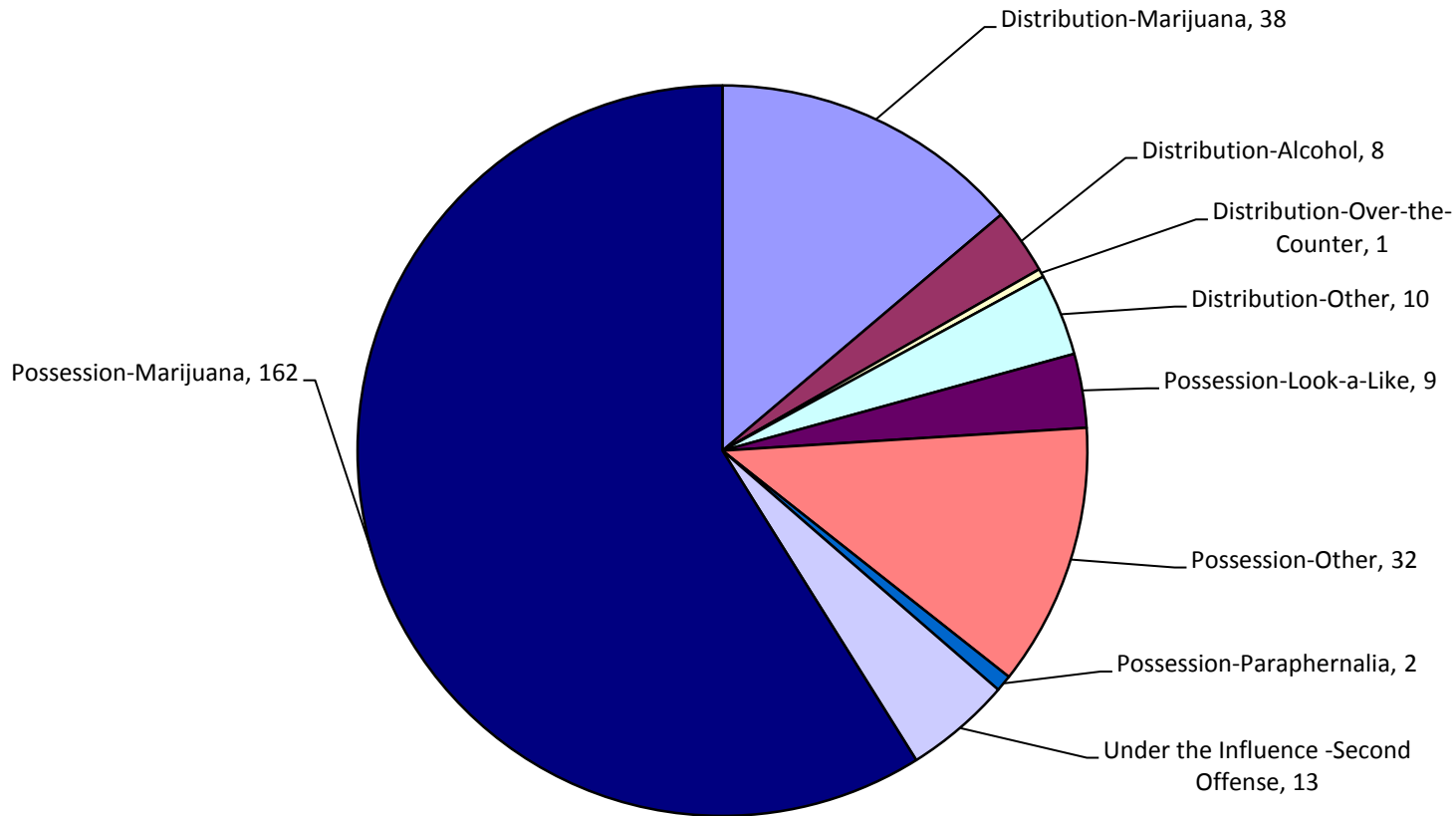


Note: Prohibited conduct includes disruption, defiance, fighting, etc.

Drug and Alcohol Violations

Recommendations for expulsion for drug and alcohol violations considered by the Hearings Office during the 2009-2010 case year are illustrated below.

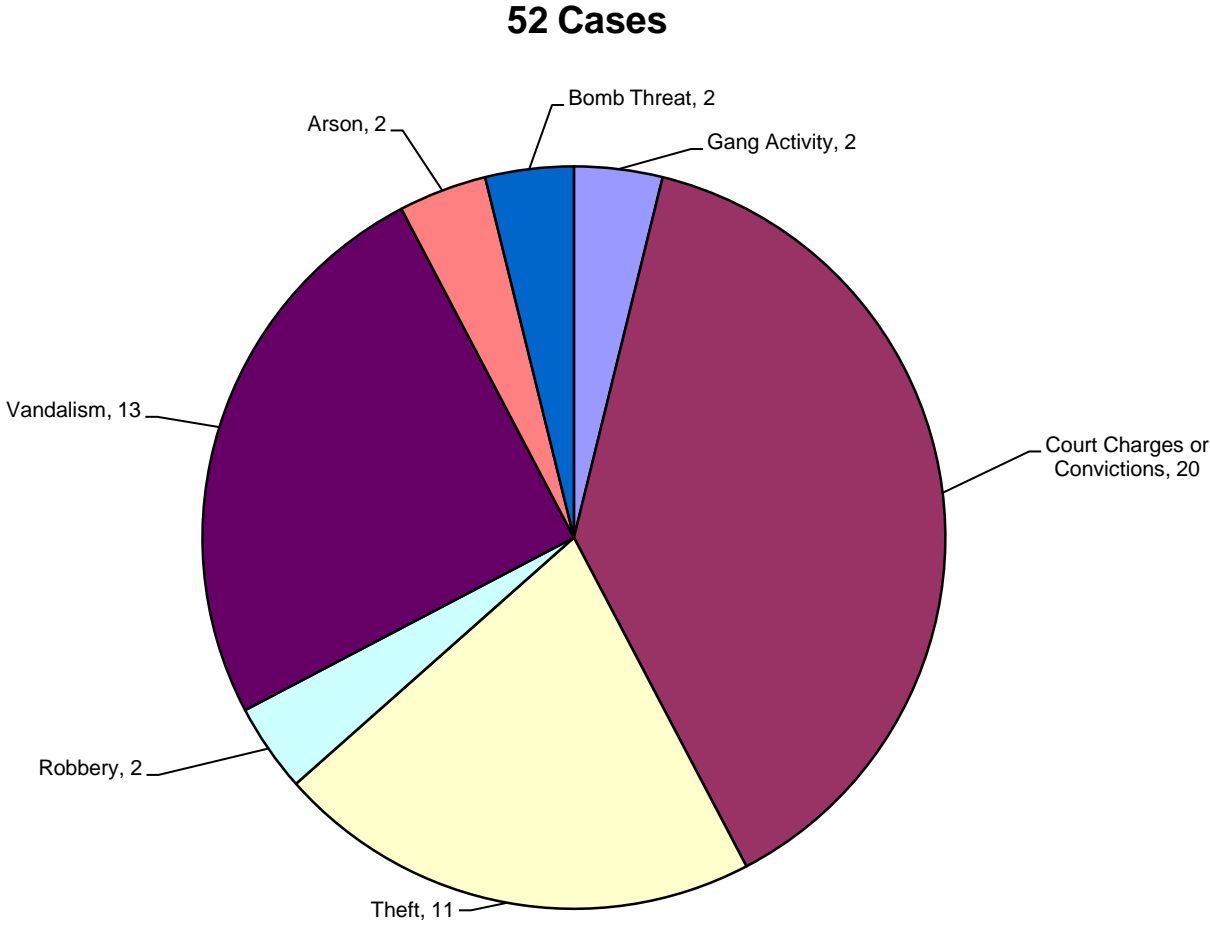
275 Cases



Note: Other includes prescription drugs, heroin, cocaine, LSD, ecstasy, etc.

Other Violations

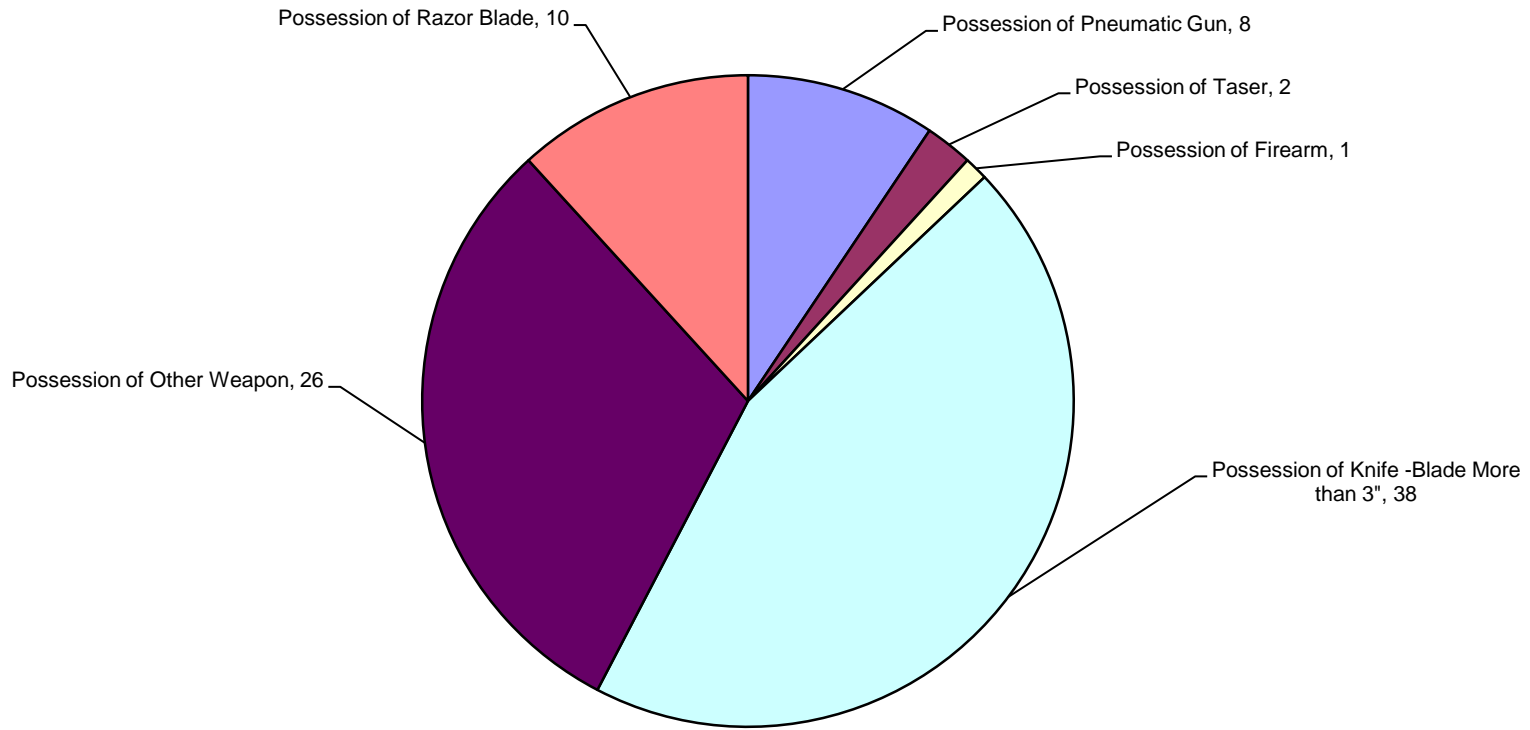
Recommendations for expulsion for other violations considered by the Hearings Office during the 2009-2010 case year are illustrated below.



Weapon Violations

Recommendations for expulsion for weapon violations considered by the Hearings Office during the 2009-2010 case year are illustrated below.

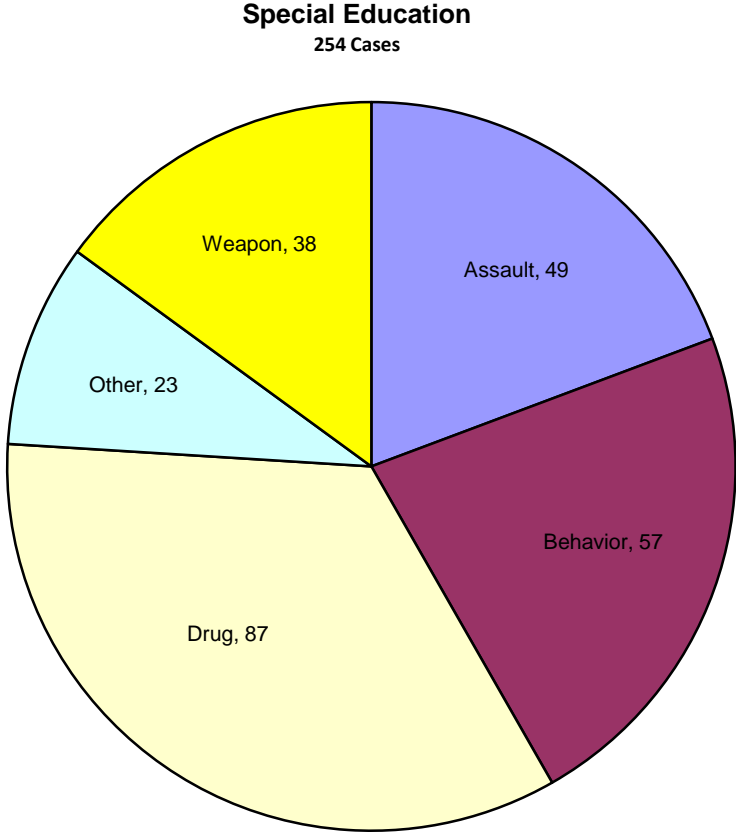
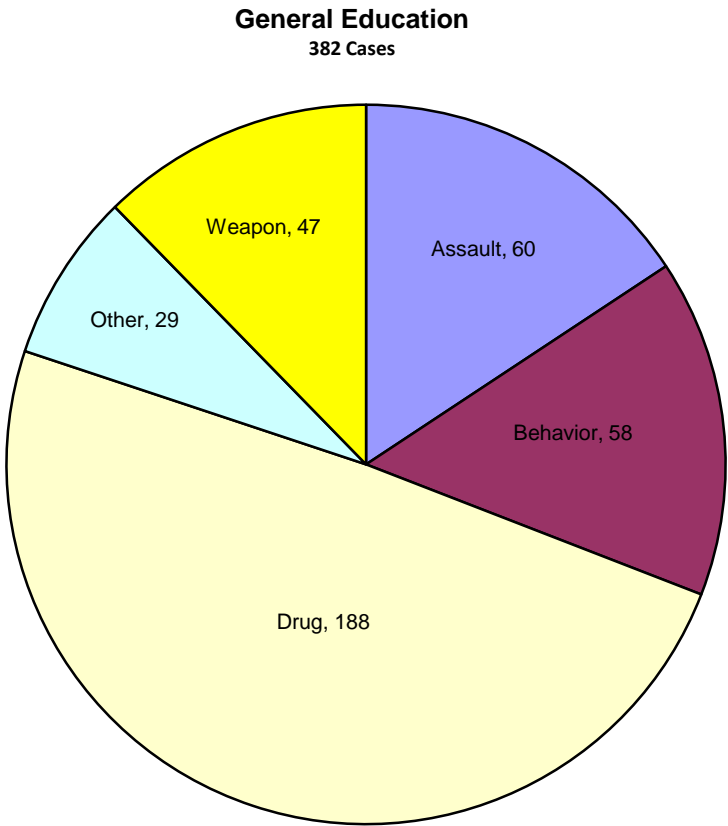
85 Cases



Note: Other includes mace, machete, explosives, brass knuckles, metal pipe, knife less than 3 inches, etc.

Violations of Student Responsibilities and Rights (SR&R)

General Education and Special Education Expulsion Recommendations

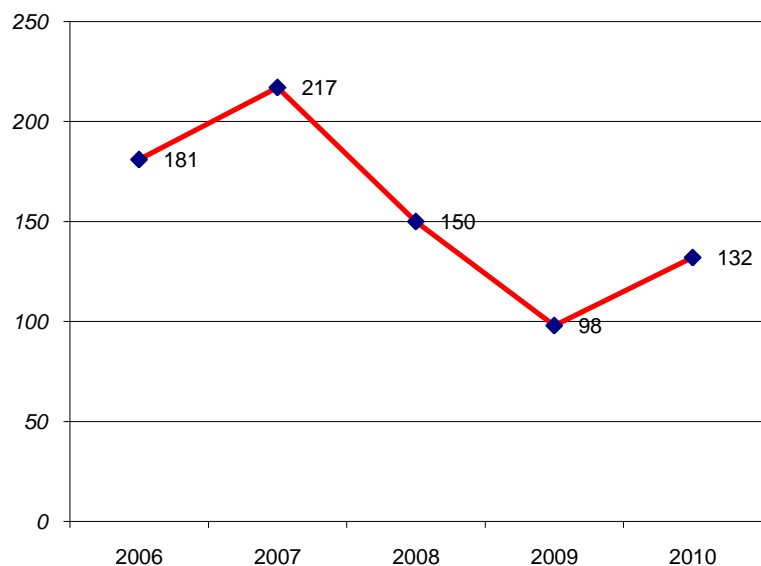


Note: Other includes arson, bomb threat, gang activity, robbery, theft, vandalism, etc.

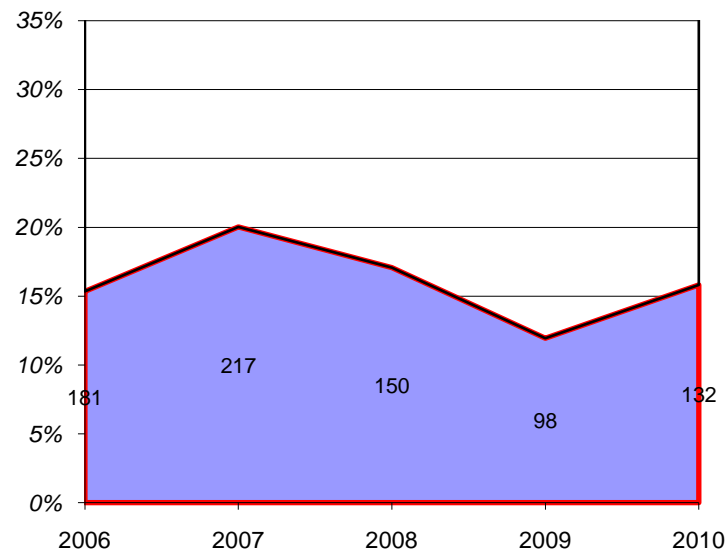
Recidivism – Violation of Probationary Conditions

Students for whom disciplinary hearings have been held are probationary students who are expected to maintain good behavior, attendance, and grades. One hundred thirty-two cases were submitted to the Hearings Office during the 2009-2010 school year for expulsion or reassignment of 118 students who have had previous hearings.

Recidivism Cases with Five Year History



Five Year History Recidivism Cases as percentage of total annual cases



Case Decisions by Hearings Office

Eight hundred thirty-three (833) cases were considered by the Hearings Office during the 2009-2010 school year.

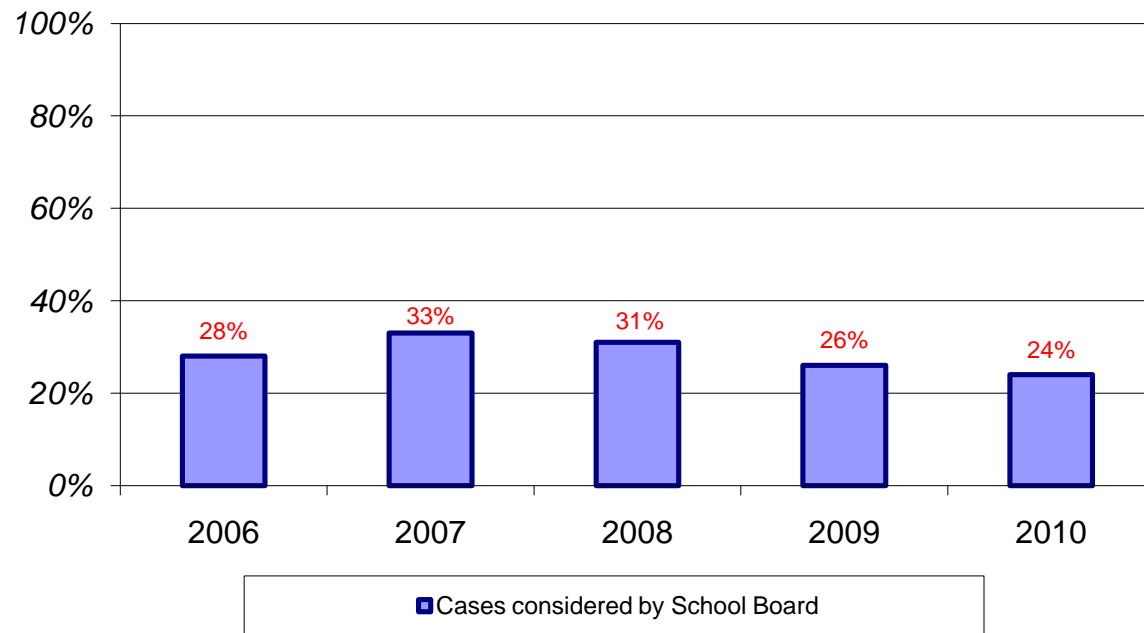
Regular School Assignments	114	Graduated	3
<i>(General Education)</i>			
Return to school	22	IEP Placements	256
Different school assignment	63	Permitted a regular school setting	88
Regular school assignment (exclusion or reentry only)	29	Restricted to an alternative school setting	168
 Alternative School Assignments	 245	 *Long Term Suspended	 61
Achievement, Integrity, and Maturity	15	School assigned 10-11	41
Adult Education	3	regular school	18
Alternative Learning Center	109	alternative school	23
Alternative High School	47	IEP placement 10-11	7
Interagency Alternative Schools (CEI, TSRC, GED)	70	permitted a regular school setting	3
On Line Campus	1	restricted to an alternative school setting	4
 Forward to the School Board	 134	Graduated	13
No letter of agreement offered	10	 Withdrew from FCPS	 20
Letter of agreement offered	124	Reentry hearing required	

**Permitted to complete assignments and earn credits through the end of the school year then assigned for 2010-2011 school year*

School Board Case Statistics 2009-2010

Twenty-four percent of eligible* cases were considered by the School Board for the 2009-2010 school year.

School Board Cases - Five Year History



* includes recommendations for expulsion, exclusion, and reassignment

School Board Summary

2009 - 2010

School Board Decisions	<u>166</u>
Full School Board	<u>68</u>
Case forwarded without Letter of Agreement to School Board not appealed	10
Case forwarded - Letter of Agreement neither accepted nor appealed	26
Appeal (on written record) of reassignment, long term suspension, or exclusion case	30
Appeal School Board Committee decision	2
School Board Committees	<u>98</u>
Letter of Agreement accepted	78
Letter of Agreement declined and appealed	20

School Board Decisions

Expelled - 131

Achievement, Integrity, Maturity	15
Alternative Learning Center	21
Alternative High School	5
Permitted to Receive Court or Agency Credits only	11
Permitted to Graduated	2
Interagency School (CEI or TSRC)	19
IEP Placement to an Alternative Program	50
*Long-Term Suspension	3
assigned to alternative program 10-11 3	
Withdrawn	5
reentry conference for alternative program if FC resident	

Reassigned – 35

Alternative Learning Center	4
Alternative High School	4
Another Regular School Placement	1
IEP Placement	13
permitted a regular school setting 6	
restricted to an alternative school setting 7	
Interagency School (CEI or TSRC)	3
*Long-Term Suspension	10
assigned to regular program 10-11 4	
assigned to alternative program 10-11 5	
IEP placed at alternative program 10-11 1	

**Permitted to complete assignments and earn credits through the end of the school year then assigned for 2010-2011 school year*